



CITY OF LOS ANGELES  
DEPARTMENT OF RECREATION AND PARKS

# PARK NEEDS ASSESSMENT

## 공원 필요 평가

COMMUNITY MEETINGS | 커뮤니티 미팅

MARCH 2025 | 2025년 3월

**OLIN**

THE ROBERT GROUP | KOUNKUEY DESIGN INITIATIVE | AGENCY: ARTIFACT | ESTOLANO ADVISORS  
BETTER WORLD GROUP | GEOSYNTEC CONSULTANTS | HR&A ADVISORS | WEST OF WEST | GREENINFO NETWORK  
LANDAU DESIGN + TECHNOLOGY | DHARAM CONSULTING | CALVADA SURVEYING | ETC INSTITUTE

**DRAFT**



# WELCOME

---

# 환영



The 2025 LA Park Needs Assessment is an initiative of The City of Los Angeles led by the Department of Recreation and Parks.

2025 LA 공원 필요 평가는 로스앤젤레스 시가 주도하는 이니셔티브로써 레크리에이션 및 공원부가 이끌고 있습니다.



**OLIN**

THE ROBERT GROUP | KOUNKUEY DESIGN INITIATIVE | AGENCY: ARTIFACT | ESTOLANO ADVISORS  
BETTER WORLD GROUP | GEOSYNTEC CONSULTANTS | HR&A ADVISORS | WEST OF WEST | GREENINFO NETWORK  
LANDAU DESIGN + TECHNOLOGY | DHARAM CONSULTING | CALVADA SURVEYING | ETC INSTITUTE

**YOUR VOICE MATTERS!**  
여러분의 목소리가 중요합니다!





**PROJECT  
INTRODUCTION**  
프로젝트 소개

**ENGAGEMENT**  
참여

**NEXT  
STEPS**  
다음 단계



PROJECT SCHEDULE: FOUR PHASES | 프로젝트 스케줄: 4 단계



기초 조사

관심 있는 관계자와의  
회의 및 기존 데이터와  
보고서 검토



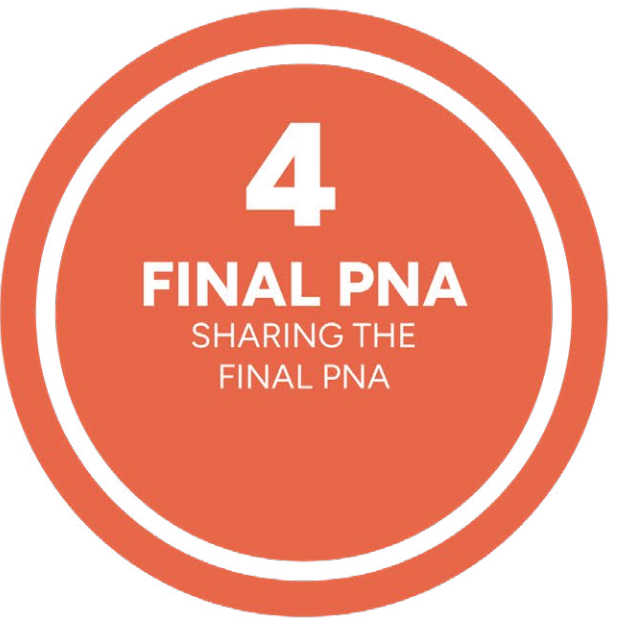
평가

연구 및 분석을 통해 요구  
사항과 기회를 파악



공원 필요 평가 초안

발견 내용을 정리하여  
공원 필요 평가 초안 작성



최종 공원 필요 평가

최종 공원 필요 평가 공유



PROJECT SCHEDULE: FOUR PHASES | 프로젝트 스케줄: 4 단계

1

GROUNDING

MEETING WITH INTERESTED  
PARTIES AND GROUNDING  
IN EXISTING DATA AND  
REPORT REVIEW

2

EVALUATION

CONDUCTING RESEARCH  
AND ANALYSIS TO  
UNDERSTAND NEEDS  
AND OPPORTUNITIES

3

DRAFT PNA

REFINING FINDINGS INTO  
A DRAFT PNA

4

FINAL PNA

SHARING THE  
FINAL PNA

JAN

1월

FEB

2월

MAR

3월

APR

4월

MAY

5월

JUN

6월

JUL

7월

AUG

8월

SEP

9월

OCT

10월

NOV

11월

DEC

12월



WE ARE HERE!

우리는 여기 있습니다!



# THE CITY OF LA OWNS AND OPERATES OVER 500 PARK SITES

LA시는 500개 이상의 공원  
부지를 소유하고 운영합니다

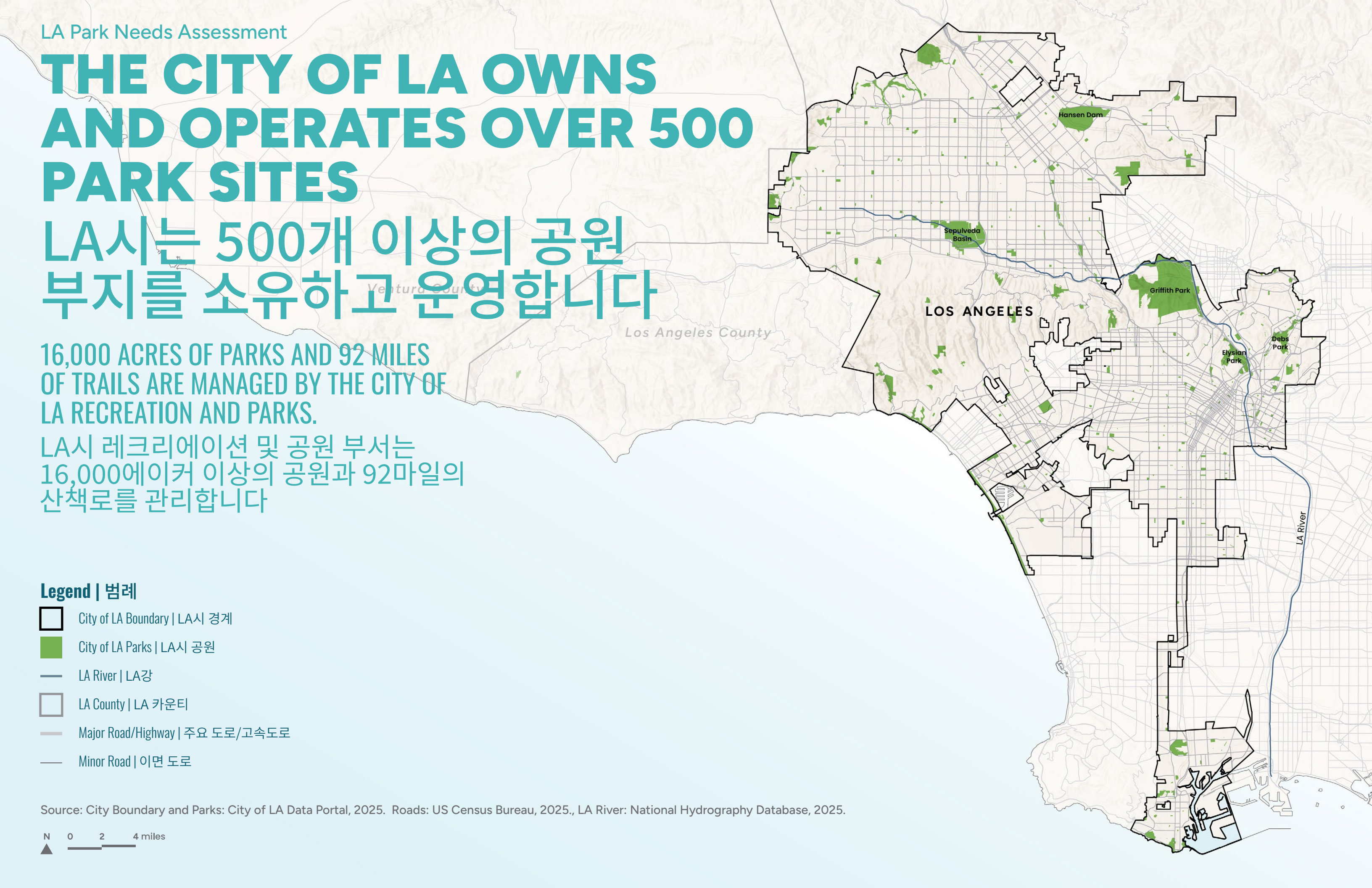
16,000 ACRES OF PARKS AND 92 MILES  
OF TRAILS ARE MANAGED BY THE CITY OF  
LA RECREATION AND PARKS.

LA시 레크리에이션 및 공원 부서는  
16,000에이커 이상의 공원과 92마일의  
산책로를 관리합니다

Legend | 범례

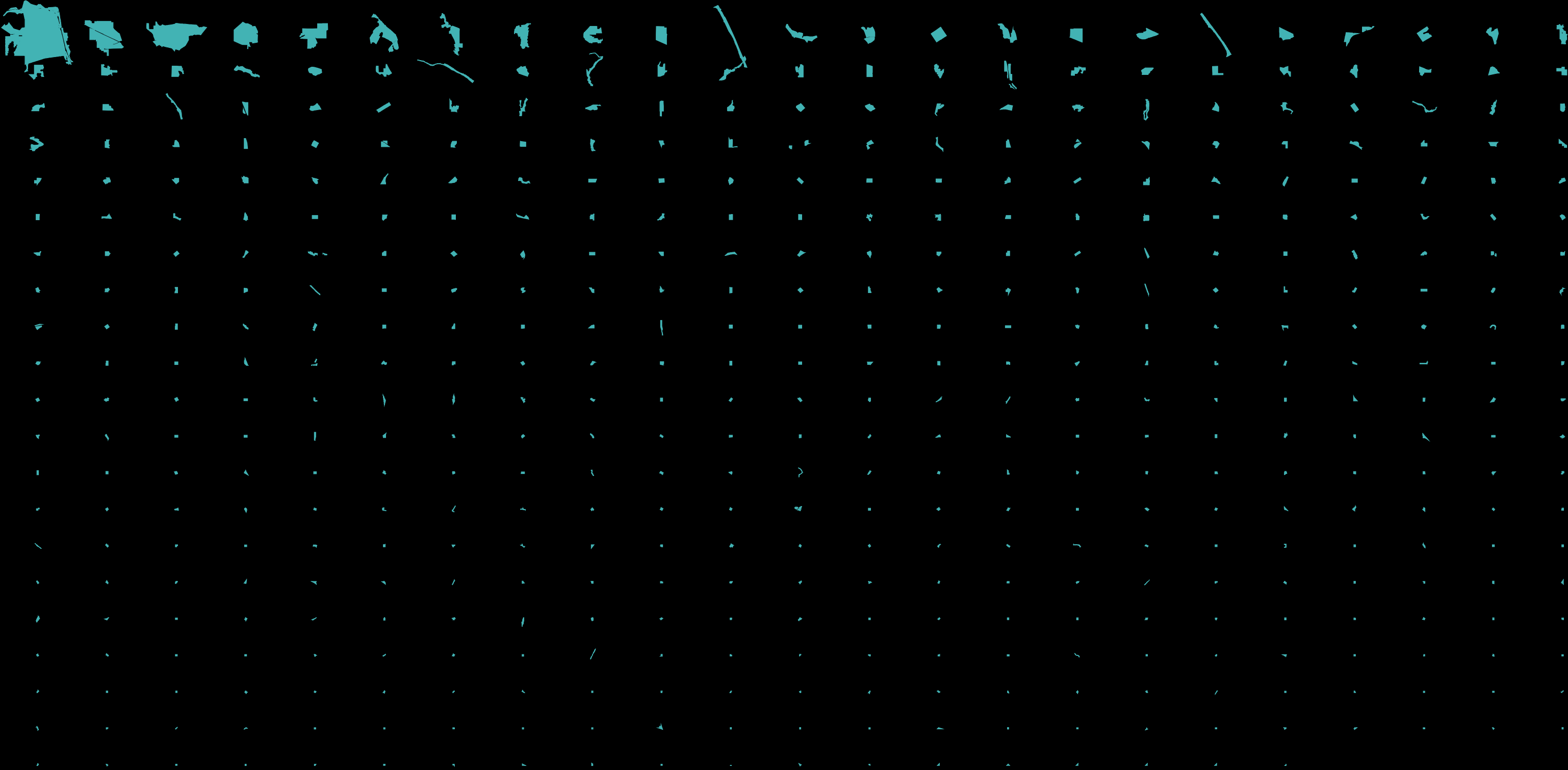
-  City of LA Boundary | LA시 경계
-  City of LA Parks | LA시 공원
-  LA River | LA강
-  LA County | LA 카운티
-  Major Road/Highway | 주요 도로/고속도로
-  Minor Road | 이면 도로

Source: City Boundary and Parks: City of LA Data Portal, 2025. Roads: US Census Bureau, 2025., LA River: National Hydrography Database, 2025.





16,000+ ACRES | 16,000+ 에이커



FACILITIES AND AMENITIES  
시설 및 편의시설

- 123 RECREATION CENTERS  
123개의 레크리에이션 센터
- 59 POOLS  
개의 수영장
- 29 SENIOR CENTERS  
개의 시니어 센터
- 15 LICENSED CHILDCARE CENTERS  
개의 허가 받은 보육 센터
- 411 PLAYGROUNDS  
개의 놀이터
- 39 UNIVERSALLY ACCESSIBLE PLAYGROUNDS  
개의 모든 사람이 사용할 수 있는 놀이터
- 130 OUTDOOR FITNESS ZONES  
개의 야외 피트니스 존
- 256 BALL FIELDS  
개의 구기 경기장
- 29 SKATE PARKS  
개의 스케이트장
- 319 TENNIS COURTS  
개의 테니스 코트
- 13 GOLF COURSES  
개의 골프장
- 13 DOG PARKS  
개의 반려견 공원

NATURAL AREAS/EQUESTRIAN  
자연 지역/승마 시설

- 92 MILES OF HIKING TRAILS  
마일의 하이킹 코스
- 13 LAKES  
개 호수
- 7 CAMPS  
개 캠프
- 3 EQUESTRIAN CENTERS  
개 승마 센터

CULTURAL/EDUCATION ASSETS  
문화/교육 자산

- GRIFFITH OBSERVATORY  
그리피스 천문
- GREEK THEATRE  
그릭 시어터
- CABRILLO MARINE AQUARIUM  
카브리요 해양 수족
- VENICE BEACH  
베니스 비치
- 12 MUSEUMS  
개의 박물관

FISCAL YEAR 23 - 24  
회계 연도 23 - 24

Operating Budget  
운영 예산

\$348 MILLION

Workforce  
인력

1,711 FT 명 정규직

5,000+ PT 명 이상 시간제

Number of Parks  
공원 수

490



# PROJECT PURPOSE

## 프로젝트 목적

Identify current and future **needs, challenges, and opportunities** for improvement across the City's parks and recreational facilities.

The PNA will guide future investment in park infrastructure and amenities that is reflective of the **diverse cultures and communities** of the City of Los Angeles.

LA시의 공원 및 레크리에이션 시설 전반에 걸쳐 현재와 미래의 **필요 사항, 과제, 개선 기회**를 인식합니다

PNA는 LA시의 **다양한 문화와 지역 사회**를 반영하는 공원 인프라와 편의시설에 대한 향후 투자를 안내할 것입니다.



# PROJECT PURPOSE

## 프로젝트 목적

The PNA is a system-wide assessment and evaluation of **RAP parks and facilities**, focusing on park needs up to and beyond 25 years into the future.

PNA는 **RAP 공원 및 시설**에 대한 시스템 전반의 평가 및 분석으로, 향후 25년 이상을 내다본 공원 필요에 중점을 두고 있습니다.





LA Park Needs Assessment

KEY DOCUMENT REVIEW | 핵심 문서 검토

15 DOCUMENTS AND COUNTING | 15개 문서 외 계속 추가 중





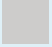
# CONNECTING WITH LA COUNTY DATA

## LA 카운티 데이터와 연계

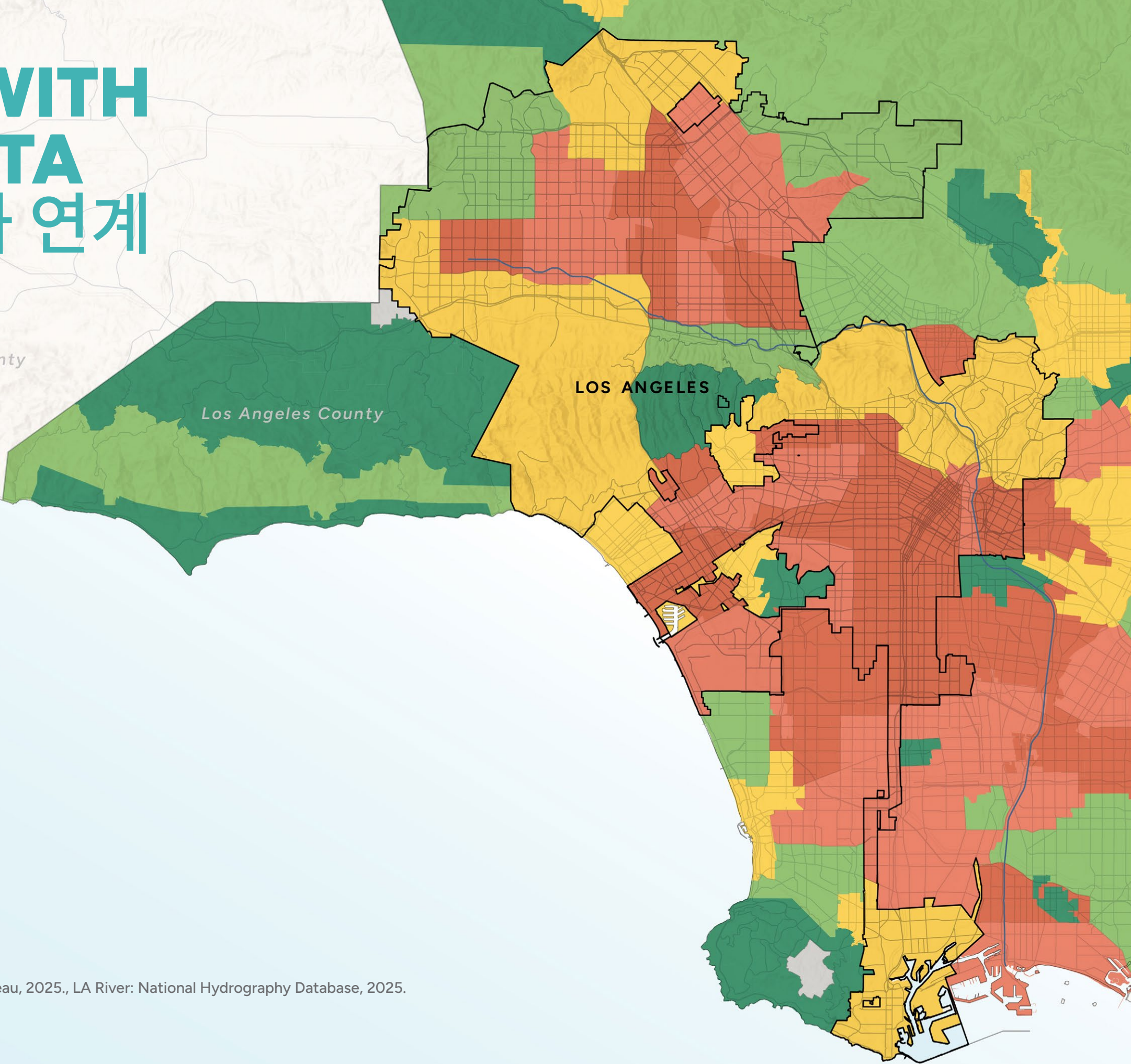
LA COUNTY COMPLETED A PARK NEEDS ASSESSMENT IN 2016 AND ADDED DATA IN THE PNA+ IN 2022.

LA 카운티는 2016년에 공원 필요 평가를 완료했으며, 2022년에 PNA+로 데이터를 추가했습니다.

### Legend

-  City of LA Boundary | LA시 경계
-  LA River | LA강
-  LA County | LA 카운티
-  Major Road/Highway | 주요 도로/고속도로
-  Minor Road | 이면 도로
-  Park Need: Very Low | 공원 필요: 매우 낮음
-  Park Need: Low | 공원 필요: 낮음
-  Park Need: Moderate | 공원 필요: 보통
-  Park Need: High | 공원 필요: 높음
-  Park Need: Very High | 공원 필요: 매우 높음
-  Park Need: Not Participating | 공원 필요: 미참여

Source: City Boundary: City of LA Data Portal, 2025. Roads: US Census Bureau, 2025., LA River: National Hydrography Database, 2025. Park Needs: County of LA Data Portal, 2025.





High-Level  
Innovative Tools  
and Criteria

고차원의 혁신 도구 및  
기준

Local Geographies  
and Lived Reality

지역 지리와 생활 현실



# HIGH-LEVEL INNOVATIVE TOOLS AND CRITERIA

## 고차원의 혁신 도구 및 기준

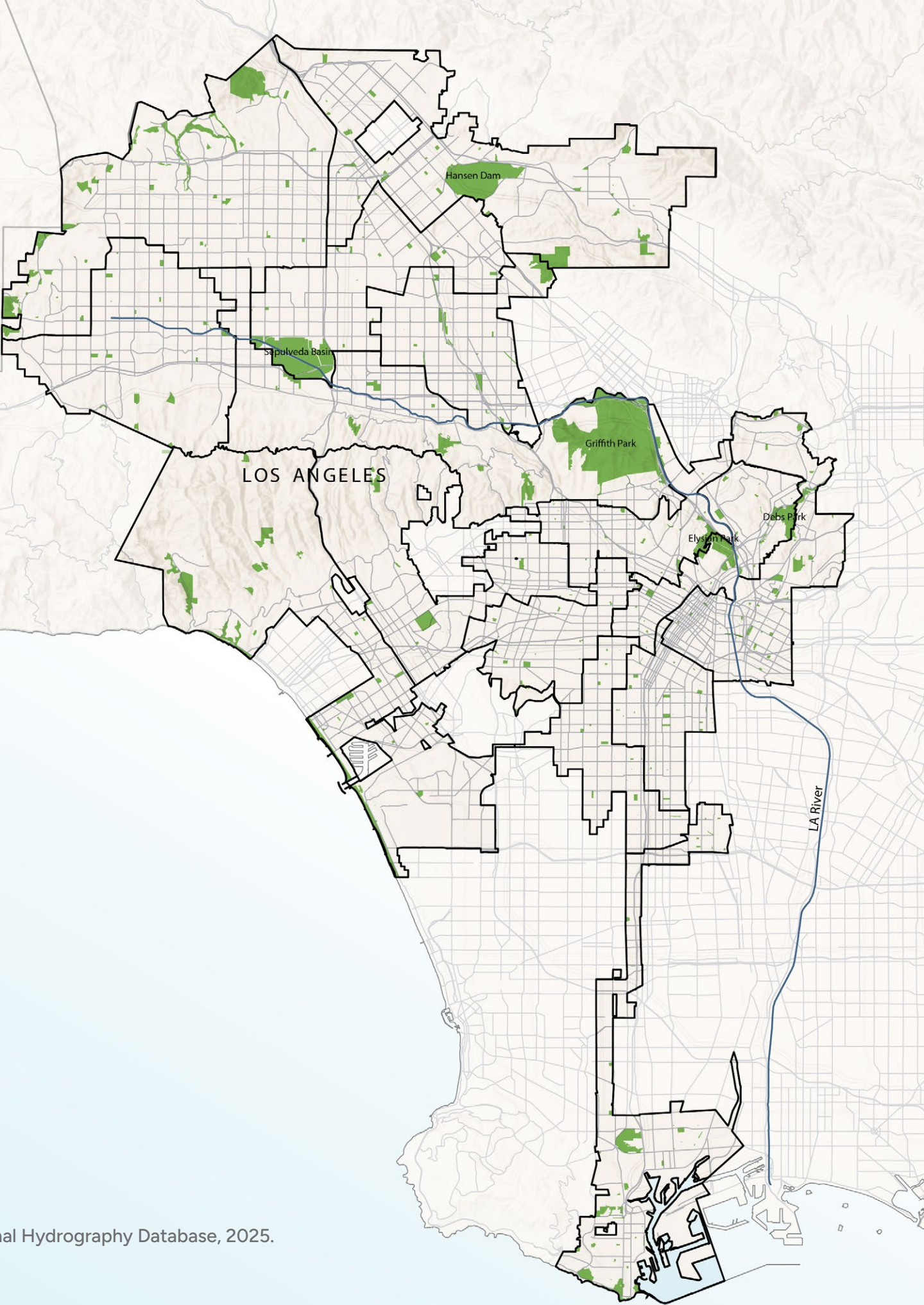
SOCIAL EQUITY, CLIMATE, AND ENVIRONMENTAL INDICATORS ALONG PARK ACCESS AND PRESSURE INDICATORS WILL FACTOR INTO AN EVALUATION OF PARK NEED.

사회적 형평성, 기후, 및 환경 지표는 공원 접근성 및 압력 지표와 함께 공원 필요 평가에 반영될 것입니다.

### Legend

-  City of LA Boundary | LA시 경계
-  City of LA Parks | LA시 공원
-  City of LA Council Districts | LA시 의회 구역
-  LA River | LA강
-  LA County | LA 카운티
-  Major Road/Highway | 주요 도로/고속도로
-  Minor Road | 이면 도로

Source: City Boundary, Council Districts, and Parks: City of LA Data Portal, 2025. Roads: US Census Bureau, 2025., LA River: National Hydrography Database, 2025.





LA Park Needs Assessment

# LOCAL GEOGRAPHIES AND LIVED REALITY

## 지역지리와 생활 현실



Echo Park. Image source: Jon Bilous / Shutterstock.com



South Park. Image source: City of Los Angeles Department of Recreation and Parks



MacArthur Park. Image source: City of Los Angeles Department of Recreation and Parks



Griffith Park. Image source: HannaTor / Shutterstock.com



# SETTING A BASELINE

## 기준선 설정

One of the first steps of the PNA  
is to understand a **baseline** from the last  
**25 years.**

PNA의 첫 번째 단계 중 하나는 지난 25년 동안의  
기준선을 이해하는 것입니다.



# SETTING A BASELINE | 기준선 설정

RAP STAFF OVER THE YEARS | RAP 직원 변동 현황

RAP STAFF  
PEAKED AT  
2,117 EMPLOYEES

RAP 직원 수는 2008  
년에 2,117명으로 정점을  
찍었습니다.

2008

RAP HAS  
APPROXIMATELY  
1,500 STAFF

RAP는 2025년에 약  
1,500명의 직원을  
보유하고 있습니다.

2025



# SETTING A BASELINE | 기준선 설정

ANNUAL BUDGET BY PROGRAM - FY24/25 | 프로그램별 연간 예산 - 2024/2025 회계연도

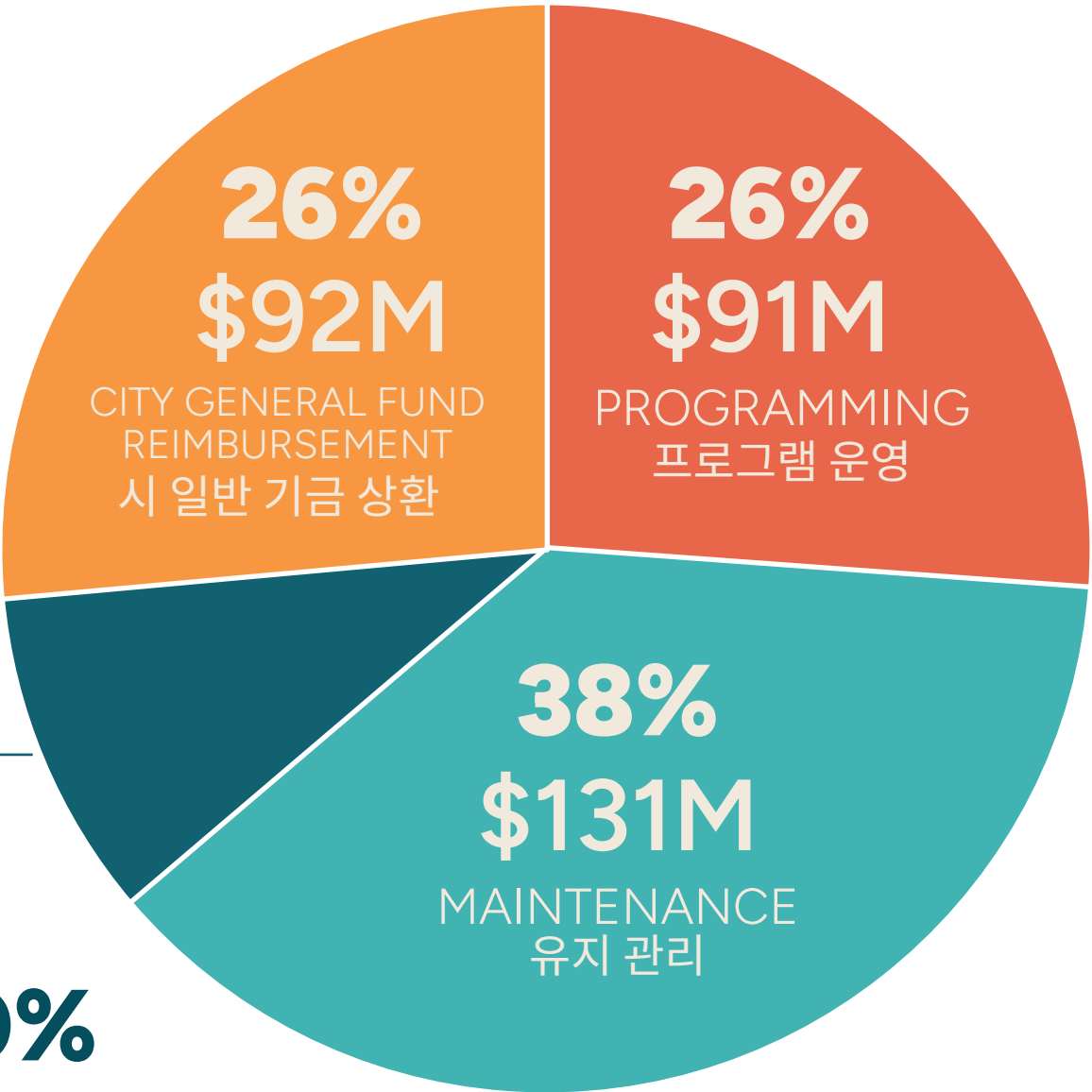
MAINTENANCE  
유지 관리

- LAND MAINTENANCE  
토지 유지 관리
- BUILDING & FACILITIES  
건물 및 시설
- CITY SERVICES  
시 서비스
- WATER & ELECTRICITY  
수도 및 전기
- REFUSE COLLECTION SERVICES  
쓰레기 수거 서비스

ADMINISTRATION  
행정

- PUBLIC SAFETY  
공공 안전
- TECHNOLOGY SUPPORT  
기술 지원
- PARTNERSHIPS, GRANTS & SPONSORSHIPS  
파트너십, 보조금 및 후원
- GENERAL ADMINISTRATION & SUPPORT  
일반 행정 및 지원
- CAPITAL PROJECTS & PLANNING  
자본 프로젝트 및 계획

CITY GENERAL FUND  
REIMBURSEMENT  
시 일반 기금 상환

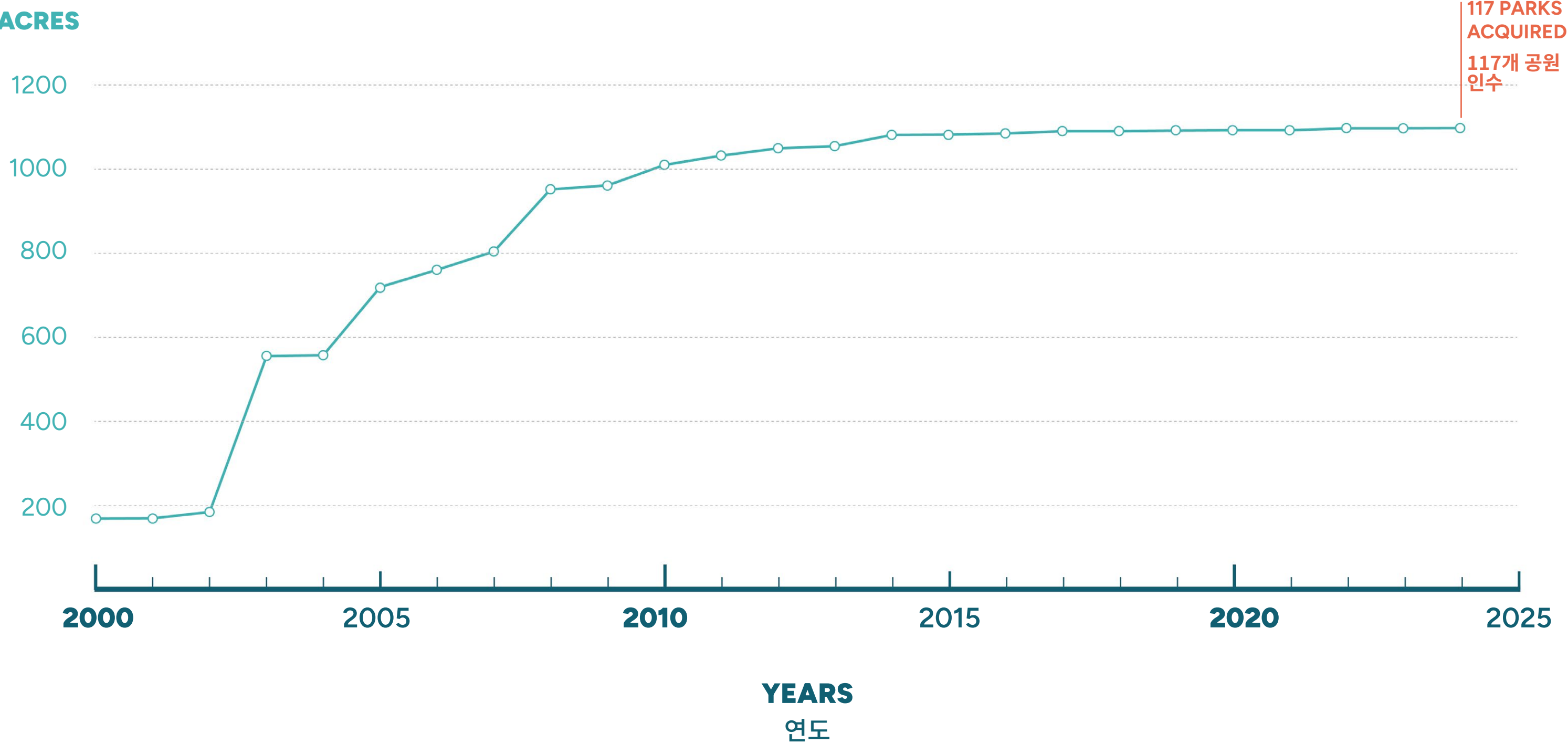


10%  
\$34M  
ADMINISTRATION  
행정

Source: City of LA RAP

# SETTING A BASELINE | 기준선 설정

PARK ACQUISITIONS 2000 - 2025 (ACRES) | 공원 취득 2000 - 2025 (에이커)





# SETTING A BASELINE | 기준선 설정

## FUNDING SOURCES | 자원 조달

CURRENT FUNDING SOURCES  
현재 자원

CITY OF LA BUDGET

로스앤젤레스 시 예산

PROPOSITION K (CITY OF LA,  
PASSED 1996, EXPIRES 2026)

발의안 K (로스앤젤레스 시, 1996년 통과, 2026년 종료)

MEASURE A (LA COUNTY,  
PASSED 2016)

법안 A (LA 카운티, 2016년 통과)

STATE FUNDING

주 정부 지원

FEDERAL FUNDING

연방 정부 지원

QUIMBY/PARK FEES

퀸비/공원 요금

OTHER AGENCY FUNDING

기타 기관 자금

PHILANTHROPY

민간 기부

PLAYLA (EXPIRES 2028)

PLAYLA (2028년 종료 예정)

FUNDING SOURCES IN 2028 & BEYOND  
WITHOUT NEW FUNDING MECHANISM  
2028년 및 그 이후 자원  
새로운 자원 조달 방법이 없는 경우

CITY OF LA BUDGET

로스앤젤레스 시 예산

~~PROPOSITION K (CITY OF LA,  
PASSED 1996, EXPIRES 2026)~~  
~~발의안 K (로스앤젤레스 시, 1996년 통과, 2026년 종료)~~

MEASURE A (LA COUNTY,  
PASSED 2016)

법안 A (LA 카운티, 2016년 통과)

STATE FUNDING

주 정부 지원

FEDERAL FUNDING

연방 정부 지원

QUIMBY/PARK FEES

퀸비/공원 요금

OTHER AGENCY FUNDING

기타 기관 자금

PHILANTHROPY

민간 기부

~~PLAYLA (EXPIRES 2028)~~  
~~PLAYLA (2028년 종료 예정)~~

LOS ANGELES 2024 PARKSCORE RANKING

로스앤젤레스 2024년 공원 점수 순위

#88 OUT OF 100 CITIES | 100개 도시 중 88위

39.1 POINTS | 점

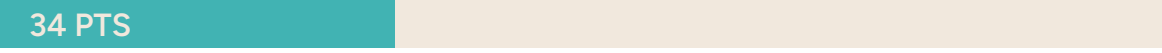
ACREAGE | 면적



ACCESS | 접근성



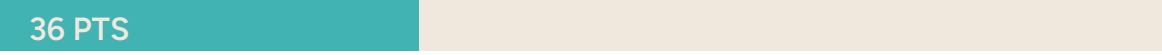
INVESTMENT | 투자



AMENITIES | 편의시설



EQUITY | 형평성



HOW DO OTHER CITIES COMPARE?

다른 도시는 어떻게 비교됩니까?

- #2

MINNEAPOLIS, MN

PUBLIC SPENDING PER ACRE: HIGHER (2X)

에이커당 공공 지출: 더 높음 (2배)

PUBLIC SPENDING PER CAPITA: HIGHER (2X)

1인당 공공 지출: 더 높음 (2배)
- #7

SAN FRANCISCO, CA

PUBLIC SPENDING PER ACRE: HIGHER

에이커당 공공 지출: 더 높음

PUBLIC SPENDING PER CAPITA: HIGHER

1인당 공공 지출: 더 높음
- #9

PORTLAND, OR

SPENDING PER ACRE: SIMILAR

에이커당 지출: 비슷함

SPENDING PER CAPITA: HIGHER (2X)

1인당 지출: 더 높음 (2배)
- #32

PHILADELPHIA, PA

SPENDING PER ACRE: SIMILAR

에이커당 지출: 비슷함

SPENDING PER CAPITA: LOWER

1인당 지출: 더 낮음
- #68

HOUSTON, TX

SPENDING PER ACRE: LOWER

에이커당 지출: 더 낮음

SPENDING PER CAPITA: LOWER

1인당 지출: 더 낮음



ECONOMICS PROCESS | 경제적 과정

THE PNA IS CONSIDERING HOW VARIOUS COSTS TIE TO THE OVERALL ECONOMICS OF LA PARKS.

PNA는 다양한 비용이 로스앤젤레스 공원의 전체 경제와 어떻게 연관되는지를 고려하고 있습니다.



EVALUATE BUDGET AND STAFFING DATA

예산 및 인력 데이터를 평가합니다.

BENCHMARK LA RAP SYSTEM BUDGET AND STAFFING AGAINST PEER CITIES

로스앤젤레스 RAP 시스템의 예산 및 인력을 유사한 도시와 비교합니다.

IDENTIFY EXISTING FUNDING GAPS

기존 재원 격차를 인식합니다.

USE COST ESTIMATES TO SIZE CAPITAL AND OPERATIONS & MAINTENANCE FUNDING NEEDS

자본 및 운영 유지 관리에 필요한 비용 추정을 사용합니다.

IDENTIFY POTENTIAL FUNDING SOURCES

SUPPORT RAP ON POTENTIAL FUNDING MECHANISM STRATEGIES

잠재적인 자금원을 인식합니다

잠재적인 자금 조달 방법 전략에 대해 RAP를 지원합니다.

# ENGAGEMENT

---

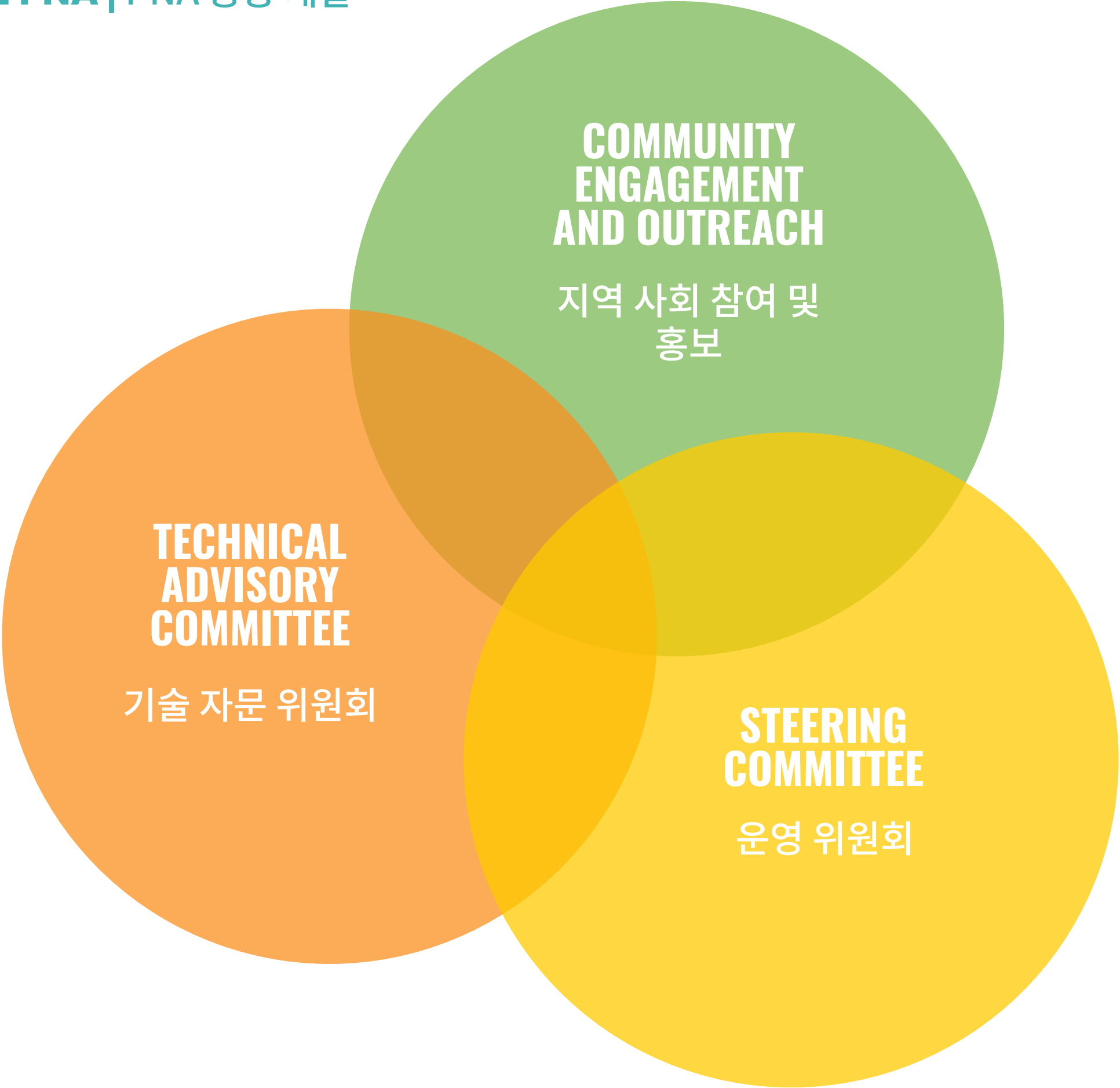
참여

**Public engagement** is foundational  
to a **comprehensive**  
Park Needs Assessment!

공공 참여는 포괄적인 공원 필요 평가의 기반이  
됩니다



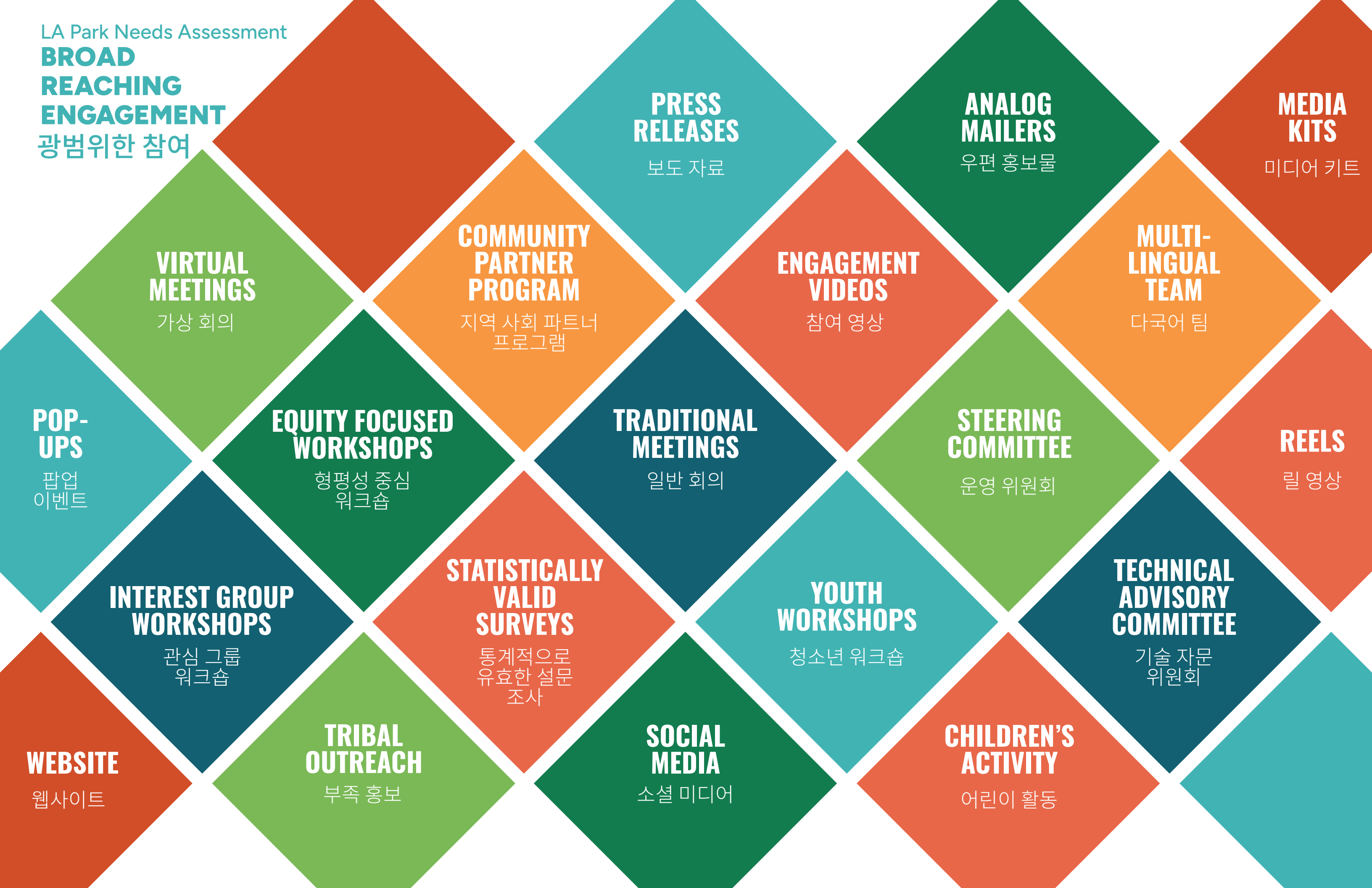




LA Park Needs Assessment

**BROAD  
REACHING  
ENGAGEMENT**

광범위한 참여





# EQUITY GROUP SESSIONS | 형평성 그룹 세션

**CRITICAL SOCIAL SERVICES**  
중요한 사회 서비스

**PARKS IN PLACE**  
현지 공원

**ACCESS FOR ALL**  
모두를 위한 접근성

**THE PUBLIC STAGE**  
공공 무대



72

ENGAGEMENT  
EVENTS

약혼 이벤트



COMING TO  
NEIGHBORHOODS,  
EVENTS, AND  
SCHOOLS NEAR  
YOU!

가까운 동네, 행사,  
학교에 찾아오세요!

SOCIAL MEDIA

소셜 미디어

CITY OF LOS ANGELES DEPARTMENT OF RECREATION AND PARKS

PARK NEEDS ASSESSMENT

The City of Los Angeles Department of Recreation and Parks is launching the first phase of the **Park Needs Assessment**, and we want to hear from you!

Your input will help transform the places where we live, work, and play—let's make it happen together!

GET CONNECTED!

Scan or visit: [needs.parks.lacity.gov](https://needs.parks.lacity.gov) or follow us @LACityParksNeeds on Instagram, LinkedIn, Facebook, & YouTube

HELP SHAPE THE FUTURE OF LOS ANGELES CITY PARKS!

Join us for the first round of community meetings where you can get the inside scoop on the process, share your ideas, and help shape the future of LA's parks and recreation spaces.

RSVP here: [bit.ly/EngageLAPNA](https://bit.ly/EngageLAPNA)

Tues, March 4

6:00pm – 8:00pm

Ramona Hall

4580 North Figueroa St

Los Angeles, CA 90065

Wed, March 5

6:00pm – 8:00pm

Wilmington Rec Center

325 N. Neptune Ave

Wilmington, CA 90744

Thur, March 6

6:00pm – 8:00pm

Algin Sutton Rec Center

8800 S Hoover St

Los Angeles, CA 90044

Sat, March 8

10:00am – 12:00pm

Victory Vineland Rec Center

11117 Victory Blvd

North Hollywood, CA 91606

Tues, March 11

6:00pm – 8:00pm

Tarzana Rec Center (in Child Care Center)

5700 Beckford Ave

Tarzana, CA 91356

Thur, March 13

6:00pm – 8:00pm

Westchester Rec Center

7000 W. Manchester Ave

Los Angeles, CA 90045

Sat, March 15

10:00am – 12:00pm

Lincoln Park Senior Center

3501 Valley Blvd

Los Angeles, CA 90031

Tues, March 18

6:00pm – 8:00pm

Virtual via Zoom

[bit.ly/lapnavirtualmeeting318](https://bit.ly/lapnavirtualmeeting318)

Sign language interpreters, assistive listening devices, or any auxiliary aides and/or services may be provided upon request. To ensure availability, you are advised to make your request at least 72 hours prior to this meeting. For additional information, please contact the project team at [LACityParksNeeds@theinstudio.com](mailto:LACityParksNeeds@theinstudio.com).

PARK NEEDS REC & PARKS ASSESSMENT



PARK NEEDS REC & PARKS ASSESSMENT

HELP SHAPE THE FUTURE OF LOS ANGELES CITY PARKS!

Join the first round of community meetings where you can get the inside scoop on the process, share your ideas, and help shape the future of LA's parks and recreation spaces.

The City of Los Angeles Department of Recreation and Parks is launching the first phase of the Park Needs Assessment, and we want to hear from you!

This is your chance to get involved, share your thoughts, and help shape the future of LA's parks and recreational spaces.

Tues, March 4

6:00pm – 8:00pm

Ramona Hall

4580 North Figueroa St.

Los Angeles, CA 90065

Sat, March 8

10:00am – 12:00pm

Victory Vineland Rec Center

11117 Victory Blvd

North Hollywood, CA 91606

Sat, March 15

10:00am – 12:00pm

Lincoln Park Senior Center

3501 Valley Blvd

Los Angeles, CA 90031

Wed, March 5

6:00pm – 8:00pm

Wilmington Rec Center

325 N. Neptune Ave

Wilmington, CA 90744

Tues, March 11

6:00pm – 8:00pm

Tarzana Rec Center (in Child Care Center)

5700 Beckford Ave

Tarzana, CA 91356

Tues, March 18

6:00pm – 8:00pm

Virtual via Zoom

[bit.ly/lapnavirtualmeeting318](https://bit.ly/lapnavirtualmeeting318)

Thur, March 6

6:00pm – 8:00pm

Algin Sutton Rec Center

8800 S Hoover St

Los Angeles, CA 90044

Thur, March 13

6:00pm – 8:00pm

Westchester Rec Center

7000 W. Manchester Ave

Los Angeles, CA 90045

RSVP at: [bit.ly/EngageLAPNA](https://bit.ly/EngageLAPNA)

Learn more at [needs.parks.lacity.gov](https://needs.parks.lacity.gov)

FOLLOW US ON SOCIAL MEDIA!

소셜 미디어에서 저희를 팔로우하세요!

@LACityParksNeeds

Instagram, Facebook, LinkedIn, Youtube

FLYERS

전단지



LA Park Needs Assessment

ENGAGEMENT AND OUTREACH MATERIALS | 참여 및 홍보 자료

WHAT DO YOU THINK?

¿QUE OPINAS?

WHAT DO YOU LIKE ABOUT YOUR PARK/RECREATION CENTER?

¿QUÉ LE GUSTA DE SU PARQUE/ CENTRO RECREATIVO?

WHAT DON'T YOU LIKE ABOUT YOUR PARK/RECREATION CENTER?

¿QUÉ NO LE GUSTA DE SU PARQUE/ CENTRO RECREATIVO?

WHAT NEEDS TO BE BETTER?

¿QUÉ DEBE MEJORARSE?

WHAT WOULD YOU LIKE TO SEE IN YOUR PARK/RECREATION CENTER?

¿QUÉ LE GUSTARÍA VER EN SU PARQUE/ CENTRO RECREATIVO?



THE CITY OF LOS ANGELES WANTS TO KNOW WHAT  
PARKS AND RECREATION FACILITIES PEOPLE NEED!

¡LA CIUDAD DE LOS ANGELES QUIERE SABER QUÉ PARQUES E INSTALACIONES  
RECREATIVAS NECESITA LA GENTE!

WHY IS THIS IMPORTANT?

¿POR QUÉ ES ESTO IMPORTANTE?

When we understand what people think is important, we can make a plan to help make the most important things happen first!  
¡Cuando entendemos lo que la gente piensa que es importante, podemos elaborar un plan para ayudar a que las cosas más importantes sucedan primero!

WE WANT TO HEAR FROM YOU!

¡QUEREMOS ESCUCHAR SU VOZ!

What do you need? A new playground or field in your park? For something to be fixed in the park?  
¿Qué necesitas? ¿Un nuevo patio de recreo o campo en su parque? ¿Que se arregle algo en su parque?

Feedback from **all Angelenos** will help determine what is most important!  
¡Los comentarios de **todos los Angelenos** nos ayudarán a determinar qué es lo más importante!

FIND THE PARK!

¡ENCUENTRA EL PARQUE!

The City of Los Angeles is home to more than 500 parks ranging in size, from less than one acre to more than 4,000 acres!  
¡La ciudad de Los Angeles es hogar de más de 500 parques de varios tamaños que varían desde menos de un acre hasta más de 4000 acres!

RENN A I S Y L E D A E V L D U  
V B O O K N E E D S A J E L I T E  
I A L O S F P A M A W E A V L A D  
S L I A B I U L Q U T D B A S H A  
T W N E K Z T P O I S E K N L T C  
A O L H H E S K F N L E O G A I R  
H T S A G W B J R X H O M E U F O  
E L A N R I L A A O F S K L S F O  
R B U C I S B R L Q A E M E P I M  
M A H O F A N L E B H N G S D R V  
O R N C A G Y A N R O R F L T G O  
S N E K M W E I T Y R A D E I G H  
A A P E O S P E E R W F A I L E D  
E W E O C L O U S E P U L V E D A  
K O D H A R H C K C A H A F F A H  
A N D L N C U Y S H O Y N D A R T  
Z O M B E R E X P O C E N T E R I

DID YOU KNOW?

¿SABIAS QUÉ?

The first park in Los Angeles is over 130 years old!  
¡El primer parque en Los Angeles tiene más de 130 años de edad!

ECHO [PARK]  
GRIFFITH [PARK]  
VISTA HERMOSA [PARK]  
ELYSIAN [PARK]

EXPO CENTER  
LAKE BALBOA [PARK]  
BARNSDALL [ART PARK]  
LAKE HOLLYWOOD [PARK]  
SEPULVEDA

THE CITY OF LOS ANGELES WANTS TO KNOW WHAT  
PARKS AND RECREATION FACILITIES PEOPLE NEED!

¡LA CIUDAD DE LOS ANGELES QUIERE SABER QUÉ PARQUES E INSTALACIONES  
RECREATIVAS NECESITA LA GENTE!

WHY IS THIS IMPORTANT?

¿POR QUÉ ES ESTO IMPORTANTE?

When we understand what people think is important, we can make a plan to help make the most important things happen first!  
¡Cuando entendemos lo que la gente piensa que es importante, podemos elaborar un plan para ayudar a que las cosas más importantes sucedan primero!

WE WANT TO HEAR FROM YOU!

¡QUEREMOS ESCUCHAR SU VOZ!

What do you need? A new playground or field in your park? For something to be fixed in the park?  
¿Qué necesitas? ¿Un nuevo patio de recreo o campo en su parque? ¿Que se arregle algo en su parque?

Feedback from **all Angelenos** will help determine what is most important!  
¡Los comentarios de **todos los Angelenos** nos ayudarán a determinar qué es lo más importante!

DID YOU KNOW?

¿SABIAS QUÉ?

There are more than 16,000 acres of park land in the City!  
¡Hay más de 16,000 acres de parques en la ciudad!

HOW BIG IS AN ACRE?

¿CUÁNTO MIDE UN ACRE?

1 ACRE  
1 ACRE  
1 FOOTBALL FIELD = 1.32 ACRES  
1 campo de fútbol americano = 1.32 ACRES

ANIMALS IN CITY PARKS

LOS ANIMALES EN PARQUES URBANOS

WHAT ANIMALS HAVE YOU SEEN IN CITY PARKS?

¿Qué animales has visto en parques urbanos?

YOU CAN DRAW PEOPLE IN THE PARK TOO!

¡TAMBIÉN PUEDES DIBUJAR PERSONAS EN EL PARQUE!

PARK ACCESS

ACCESO AL PARQUE

WHAT'S YOUR ROUTE TO YOUR PARK LIKE?

¿CÓMO ES SU RUTA AL PARQUE?

LET'S GET TO THE PARK!

¡VAMOS AL PARQUE!

YOU MADE IT!

¡LO LOGRASTE!

FIND THE PARK!

¡ENCUENTRA EL PARQUE!

RENN A I S Y L E D A E V L D U  
V B O O K N E E D S A J E L I T E  
I A L O S F P A M A W E A V L A D  
S L I A B I U L Q U T D B A S H A  
T W N E K Z T P O I S E K N L T C  
A O L H H E S K F N L E O G A I R  
H T S A G W B J R X H O M E U F O  
E L A N R I L A A O F S K L S F O  
R B U C I S B R L Q A E M E P I M  
M A H O F A N L E B H N G S D R V  
O R N C A G Y A N R O R F L T G O  
S N E K M W E I T Y R A D E I G H  
A A P E O S P E E R W F A I L E D  
E W E O C L O U S E P U L V E D A  
K O D H A R H C K C A H A F F A H  
A N D L N C U Y S H O Y N D A R T  
Z O M B E R E X P O C E N T E R I

HOW MANY HAVE YOU BEEN TO?

¿EN CUANTOS PARQUES HAS ESTADO?

GET INVOLVED! ¡INVOLÚCRATE!

EVERY VOICE MATTERS!

¡CADA VOZ CUENTA!

ENGAGEMENT EVENTS ARE BEING HELD AROUND THE CITY DURING 2025 AND YOU, YOUR FAMILY, AND FRIENDS CAN JOIN IN PERSON OR VIRTUALLY.

LOS EVENTOS DE PARTICIPACIÓN OCURRIRÁN A TRAVÉS DE LA CIUDAD DURANTE EL 2025 Y USTED, SU FAMILIA Y SUS AMIGOS PODRÁN PARTICIPAR EN PERSONA O VIRTUALMENTE.

VISIT THE PROJECT WEBSITE (NEEDS.PARKS.LACITY.GOV)

TO EXPLORE EVENTS AROUND THE CITY AND TAKE OUR SURVEY.


VISTE EL SITIO WEB DEL PROYECTO (NEEDS.PARKS.LACITY.GOV) PARA CONOCER LOS EVENTOS EN SU CIUDAD Y RESPONDER NUESTRA ENCUESTA.

Scan the QR code to visit the project website!

¡Escanea el código QR para visitar el sitio web del proyecto!

YOUTH ACTIVITY AND EDUCATION MATERIALS

청소년 활동 및 교육 자료



Planning ProcessCommunity EngagementResourcesFAQ

Help shape the future of parks and recreation in Los Angeles!

# Scroll down for upcoming meetings and surveys

The City of Los Angeles is excited to begin work on updating its Park Needs Assessment for the first time since 2009. The Park Needs Assessment will be a roadmap to just and fair capital investment in parks and recreation and equitable connections to quality parks and recreation, to meet current and future needs of residents!

## GET INVOLVED!

Be part of the planning process for the City of Los Angeles Park Needs Assessment! You can participate by attending a community event, taking the online survey, or by writing to the team directly to let us know your thoughts, concerns, and big ideas.

### ATTEND A COMMUNITY MEETING

RSVP Here!

### CAN'T MAKE IT TO A COMMUNITY MEETING? TAKE OUR SURVEY!

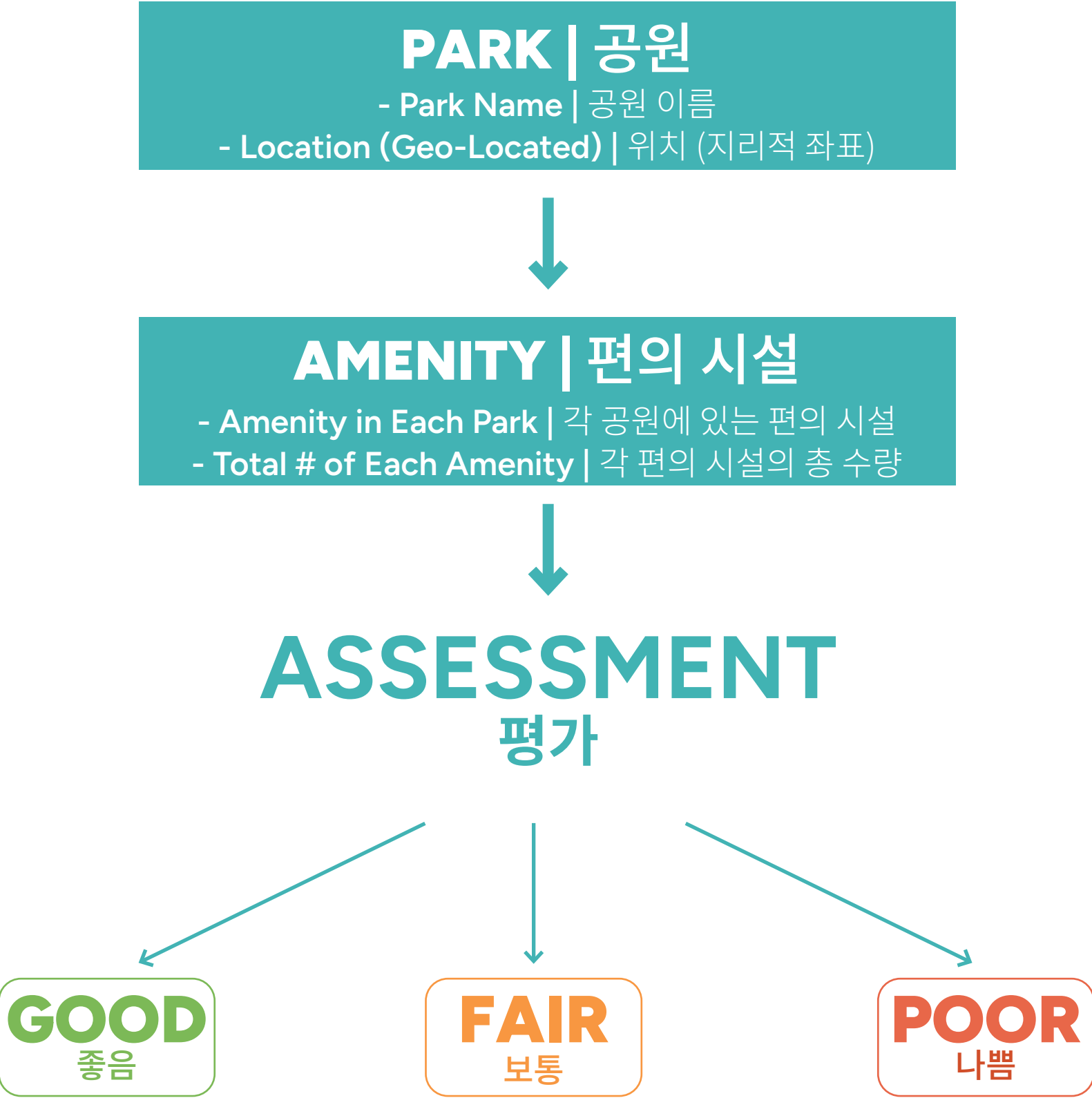
Translate This Site

Select Language



**FACILITIES CONDITIONS ASSESSMENT: DATA AVAILABLE | 시설 상태 평가: 사용 가능한 데이터**

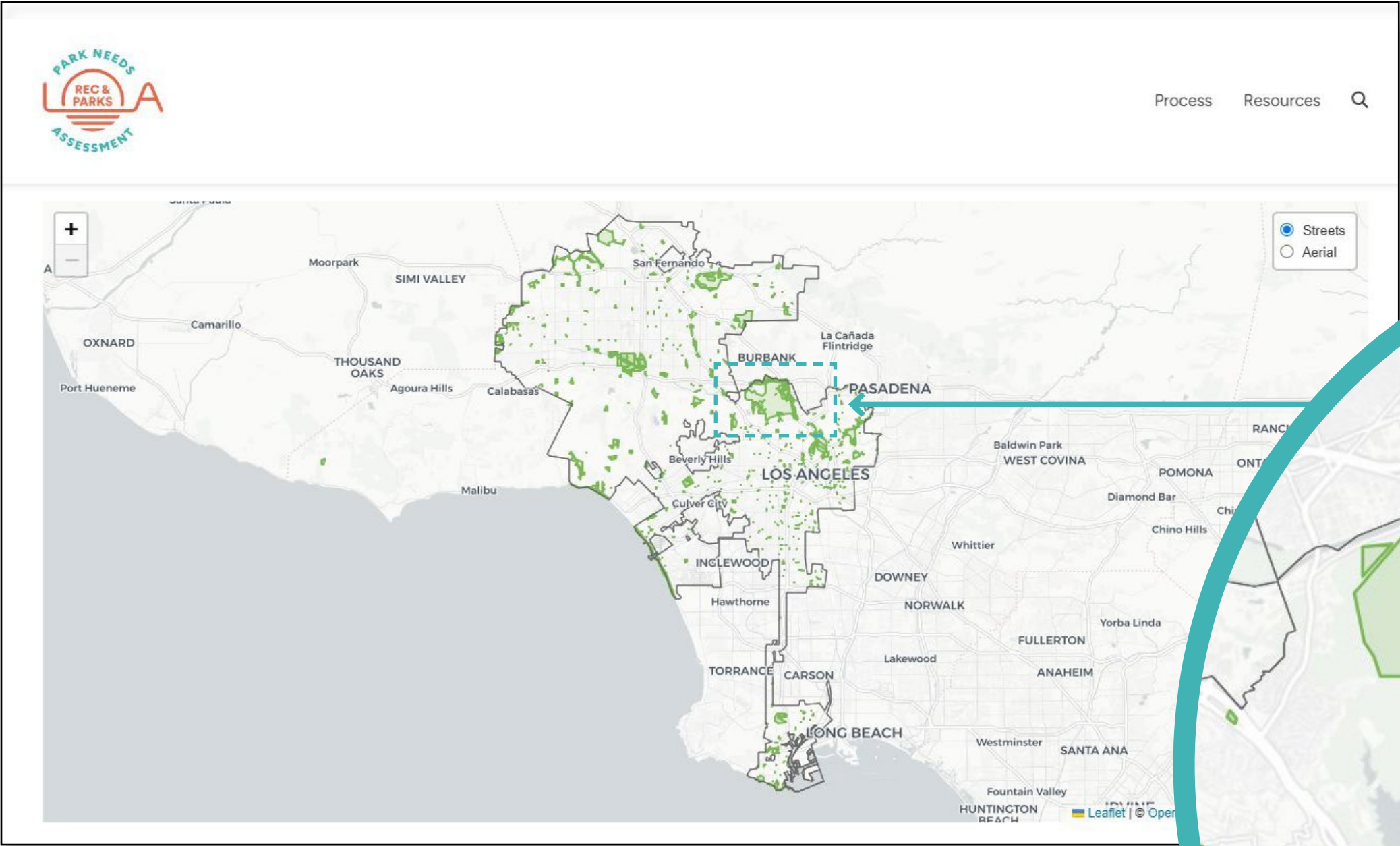
RAP TRACKS THE CONDITIONS OF FACILITIES AROUND THE CITY | RAP는 도시 전역의 시설 상태를 추적합니다



WEBSITE AND PARK DASHBOARD: MAIN LANDING PAGE | 웹사이트 및 공원 대시보드: 주요 랜딩 페이지

THE PNA DASHBOARD IS CREATING AN EASY WAY FOR ANGELENOS TO LEARN ABOUT THEIR PARKS

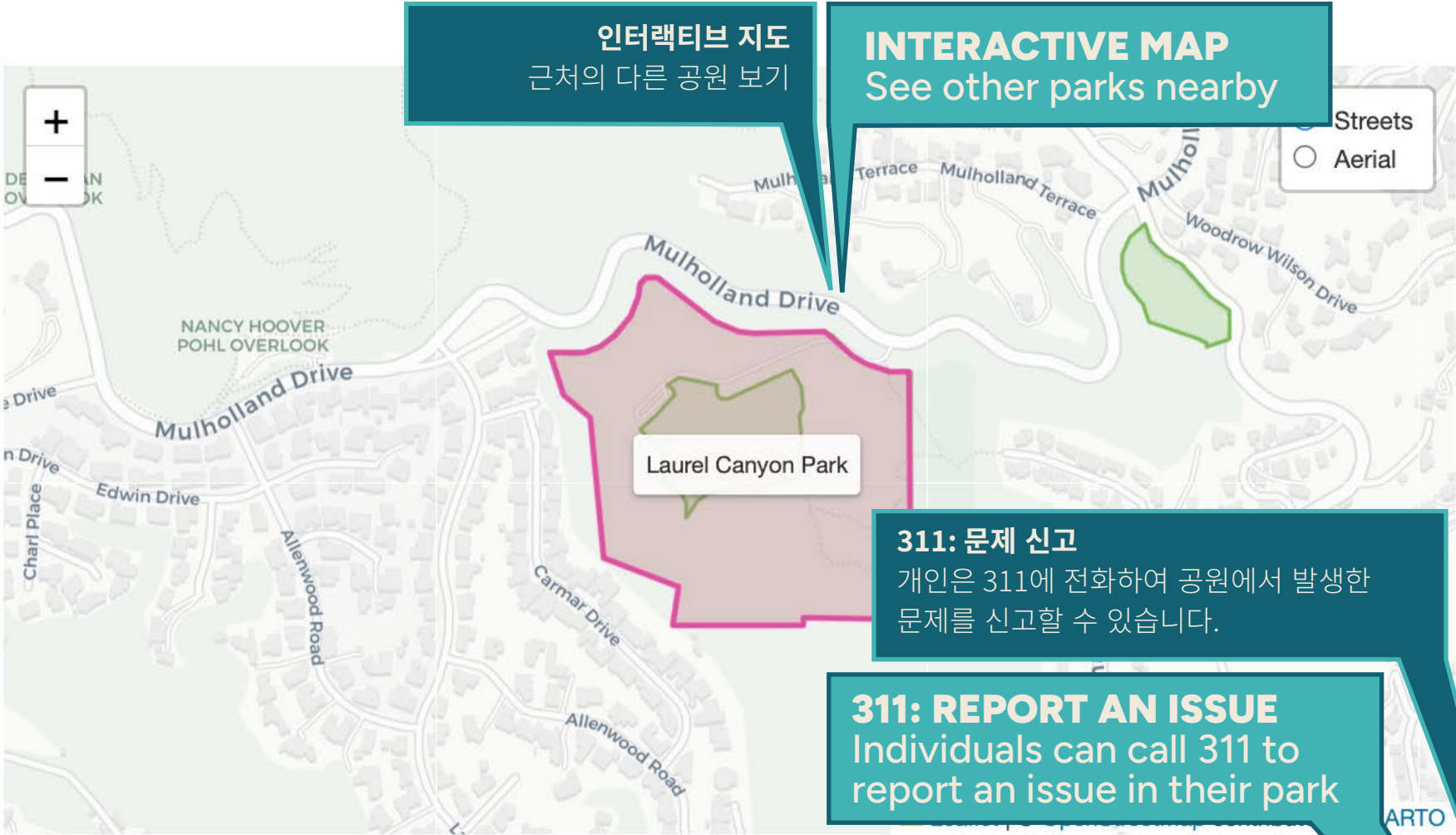
PNA 대시보드는 앤젤레노들이 자신들의 공원에 대해 쉽게 알 수 있는 방법을 제공하고 있습니다.



INTERACTIVE MAP | 인터랙티브 지도  
Zoom in to each neighborhood/park | 각 동네/  
공원으로 확대



LAUREL CANYON PARK



LOCATION

8260 W Mulholland Dr  
Los Angeles, CA

For more information about this park, including park hours, [click here](#).

SUB-AREAS

- Laurel Canyon Dog Park

FACILITIES CONDITIONS ASSESSMENT  
Summary of FCA by park

시설 상태 평가  
공원별 FCA 요약

23.4 acres  
Neighborhood Park  
park classification

CONDITIONS ASSESSMENT

Amenity	Good	Fair	Poor	Total
Dog Parks	1	—	—	1
Picnic Shelters	—	1	—	1
Playgrounds	—	—	1	1

Report an Issue

If you have a maintenance or nuisance issue in this park, please submit a service request on [MyLA311](#).

PARK PRIORITIZATION STRATEGY | 공원 우선순위 전략

THE PARK NEEDS ASSESSMENT WILL EVALUATE DATA AND COMMUNITY FEEDBACK TO EVALUATE NEEDS

공원 필요 평가는 데이터와 지역 사회의 피드백을 바탕으로 필요를 평가할 것입니다.



PNA Priorities  
PNA 우선순위

Facilities Condition Assessment

시설 상태 평가

Park Pressure

공원 압력

Park Access

공원 접근성

Recreation Facilities

레크리에이션 시설

Arts & Culture Facilities

예술 및 문화 시설

Community Priorities

지역 사회 우선순위

Equity  
형평성

CalEnviroScreen

CalEnviroScreen

SB535 Disadvantaged Communities

SB535 취약 지역 사회

LA Equity Index

LA 형평성 지수

Health Atlas

건강 아틀라스

Capital Investments since 2000

2000년 이후의 자본 투자

Population Projections

인구 예측

Population Vulnerability - health, income, etc | 인구 취약성 -

건강, 소득 등

Gender Equity | 성 평등

Homelessness | 노숙자 문제

Housing/Displacement Risk | 주택/이주 위험

Public Safety | 공공 안전

Exposure to Toxins & Pollution | 독소 및 오염 노출

Resiliency  
회복력

Climate Vulnerability Assessment

기후 취약성 평가

CA Climate Adaptation Strategy

캘리포니아 기후 적응 전략

CAL-Adapt

CAL-Adaptar

Heat Island | 열섬 현상

Habitat Conservation/Species | 서식지 및 종 보존

Biodiversity | 생물 다양성

Shade Connectivity | 그늘 연결성

Inland Flooding | 내륙 홍수

Water Demand, Quality, & Usage | 물 수요, 품질 및 사용

Fire Threat Severity | 화재 위험 심각도

Alignment with other City  
Priorities  
다른 도시 우선순위와의 일치

Transit Oriented Communities

교통 중심 커뮤니티

Community Safety

지역 사회 안전

Others!

기타!

GENERATE NEEDS  
수요 생성



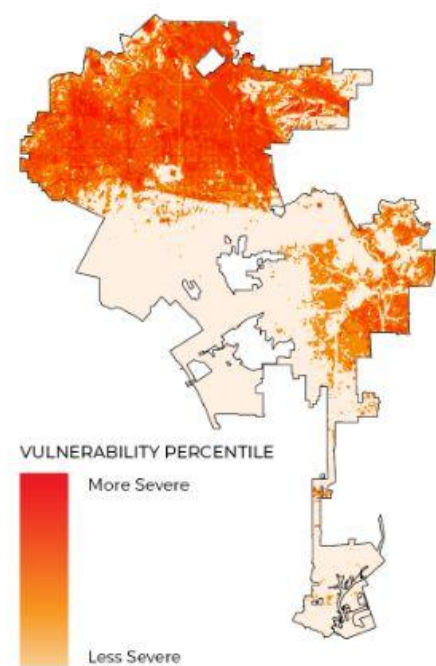
LA Park Needs Assessment

**PARK PRIORITIZATION STRATEGY | 공원 우선순위 전략**

THE PARK NEEDS ASSESSMENT WILL EVALUATE DATA AND COMMUNITY FEEDBACK TO EVALUATE NEEDS

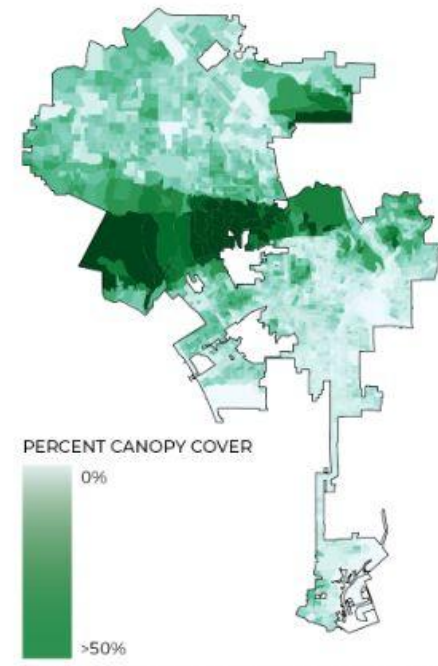
공원 필요 평가는 데이터와 지역 사회의 피드백을 바탕으로 필요를 평가할 것입니다.

HEAT ISLAND SEVERITY



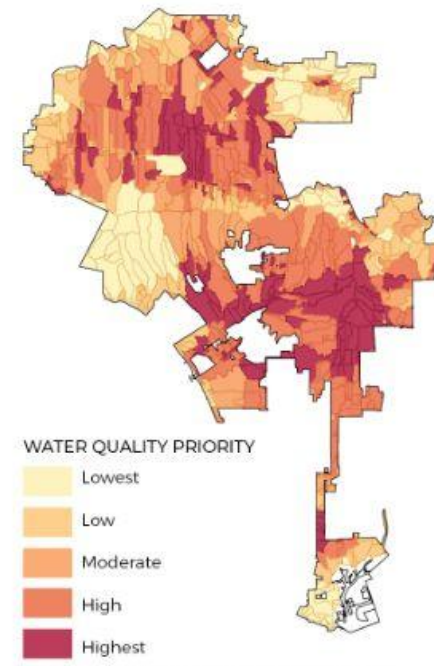
Source: Trust for Public Land Climate-Smart Cities Los Angeles, Heat Island Severity, 2019.

TREE CANOPY COVER BY BLOCK GROUP



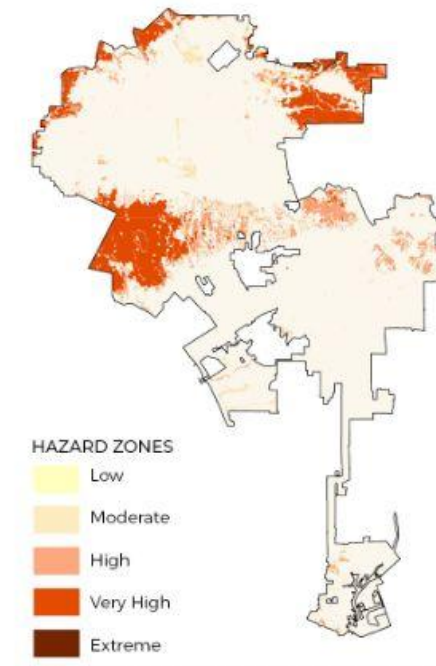
Source: Tree Canopy - Block Group, Tree People, Center for Urban Resilience (CUREs) at Loyola Marymount University, 2020.

WATER QUALITY PRIORITY



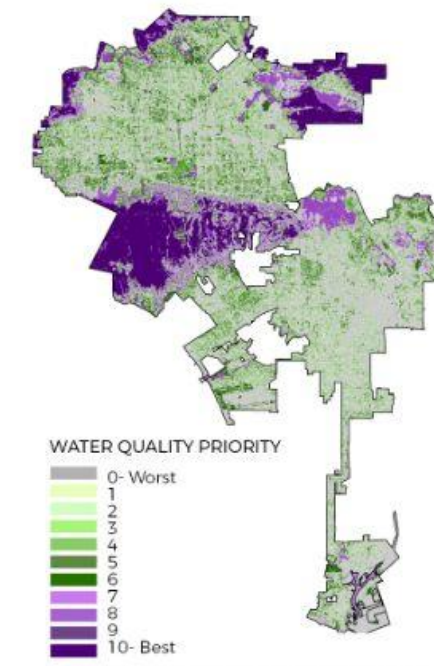
Source: LA County Public Works LSPC Model Input, 2012, <http://dpw.lacounty.gov/wmd/lrwp/>; Geosyntec, 2018.

FIRE THREAT SEVERITY



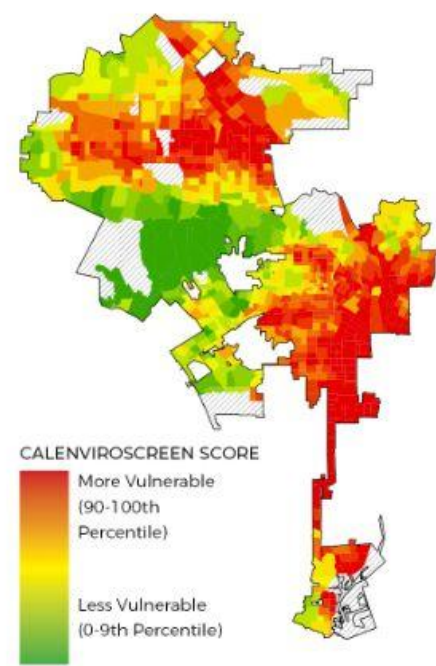
Source: State of California Department of Forestry and Fire Protection, Fire and Resource Assessment Program (FRAP) Statewide Fire Threat v14\_2, Accessed January 16th, 2023.

HABITAT QUALITY



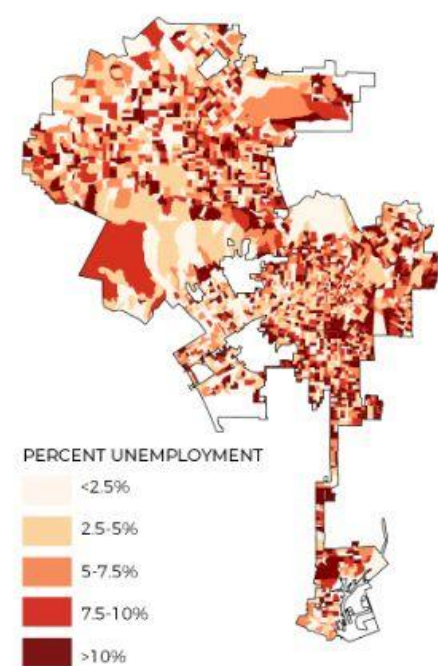
Source: LA Biodiversity Index Baseline Report, Habitat Quality, LA Sanitation, 2022.

CALENVIROSCREEN 4.0



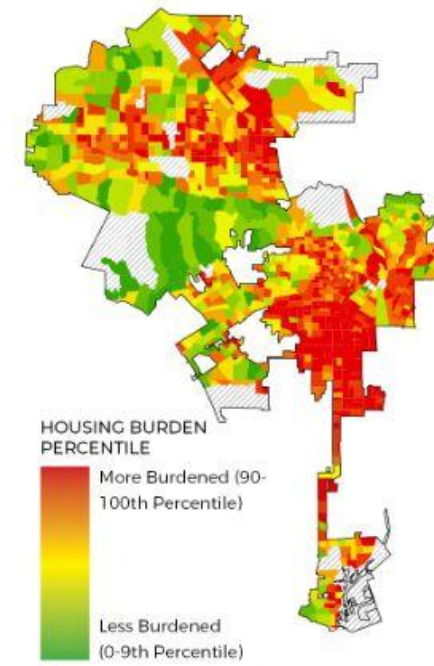
Source: California Office of Environmental Health Hazard Assessment, CalEnviroScreen4.0, 2021.

PERCENT UNEMPLOYMENT



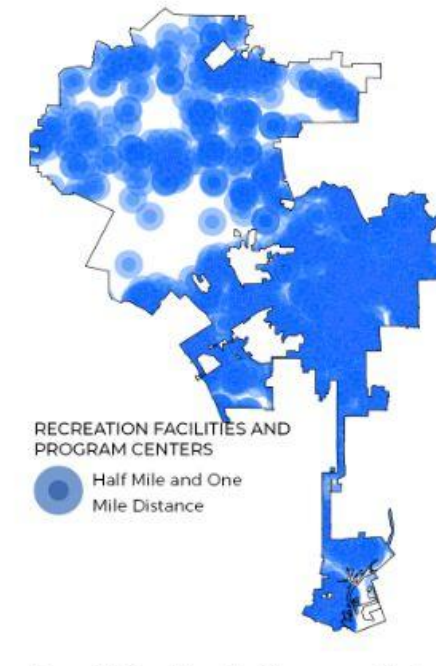
Source: U.S. Census Bureau, American Community Survey 2022 5-Year Estimates, Table B01001, 2022.

HOUSING BURDEN



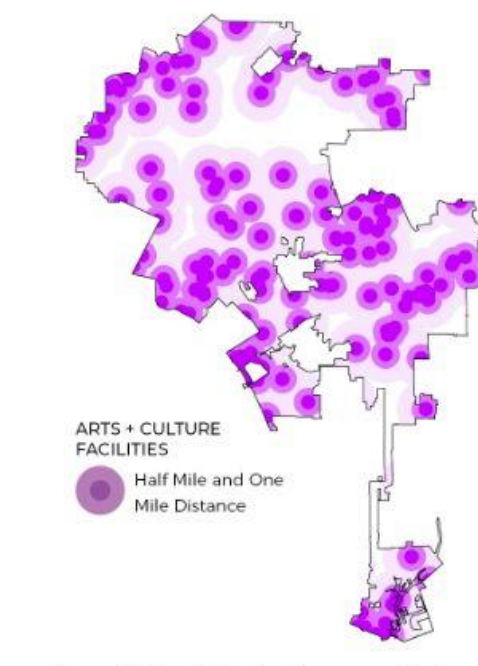
Source: California Office of Environmental Health Hazard Assessment, CalEnviroScreen4.0, 2021.

FACILITIES + PROGRAM: RECREATION



Source: LA County Location Management System: Points of Interest

FACILITIES + PROGRAM: ARTS/CULTURE



Source: LA County Location Management System: Points of Interest



# PROJECTING TOTAL POPULATION CHANGE

## 전체 인구 변화 예측

BETWEEN 2019 AND 2050, COUNCIL DISTRICT 14 IS EXPECTED TO SEE AN OVERALL POPULATION GROWTH, WHILE COUNCIL DISTRICT 9 AND PORTIONS OF COUNCIL DISTRICTS 7, 8, AND 12 ARE EXPECTED TO SEE SOME POPULATION DECLINE.

2019년과 2050년 사이, 시의회 14구역은 전체 인구 증가가 예상되며, 9구역과 7, 8, 12구역 일부는 인구 감소가 예상됩니다.

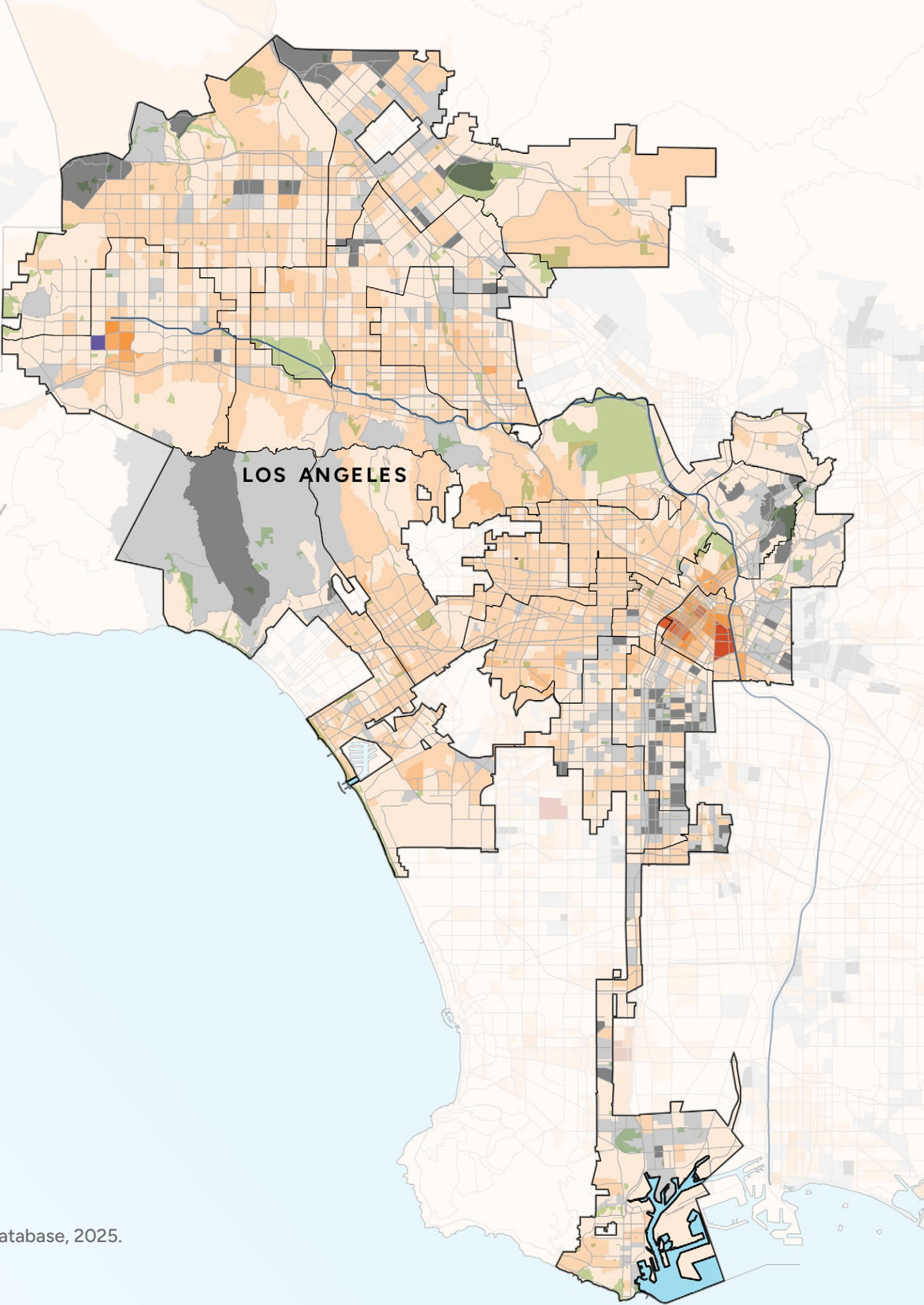
Legend

- City of LA Boundary | LA시 경계
- City of LA Parks | LA시 공원
- LA River | LA강
- LA County | LA 카운티
- Major Road/Highway | 주요 도로/고속도로
- Minor Road | 이면 도로

Total Population Change 2019 - 2050

- |                                |                 |
|--------------------------------|-----------------|
| ≤ -500                         | 4,000 - 6,000   |
| -500 - -250                    | 6,000 - 8,000   |
| -250 - 100                     | 8,000 - 10,000  |
| No Change (-100 - 100)   변화 없음 | 10,000 - 12,000 |
| 100 - 1,000                    | 12,000 - 15,000 |
| 1,000 - 2,000                  | ≥ 15,000        |
| 2,000 - 4,000                  |                 |

Source: City Boundary and Parks: City of LA Data Portal, 2025. Roads: US Census Bureau, 2025., LA River: National Hydrography Database, 2025. Projected population density: SCAG Connect SoCal 2024.





# DECISION-MAKING FRAMEWORK

## 의사결정 프레임워크

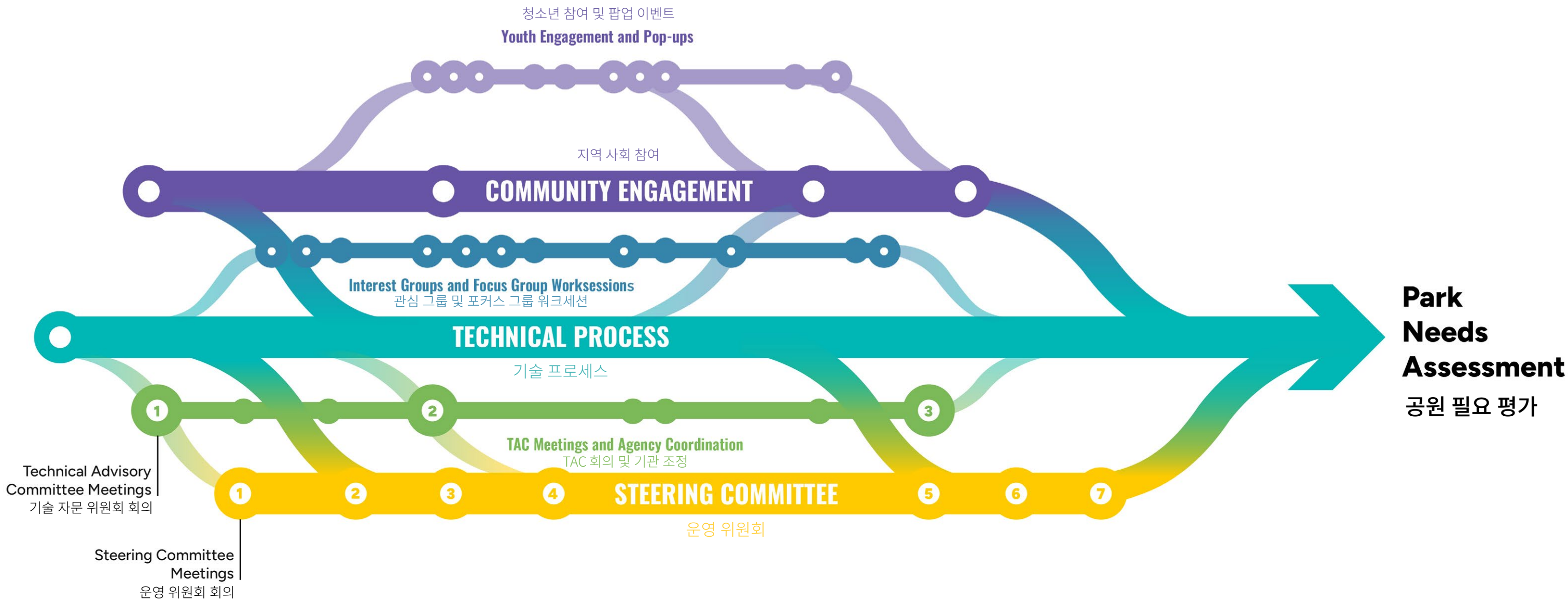
THE PNA WILL CREATE A DECISION-MAKING FRAMEWORK TO HELP GUIDE PARKS DECISIONS.  
PNA는 공원 결정 안내를 위한 의사결정 프레임워크를 만들어 나갈 것입니다.



**GENERATE PRIORITIES**  
우선순위 생성

LA Park Needs Assessment

CO-CREATING THE PNA | PNA 공동 개발





# NEXT STEPS AND UPCOMING DATES

---

다음 단계 및 다가오는 일정



## 참여

## THIS MONTH

## 이번 달

LA의 다양한 지역을 대상으로 한  
대면 및 가상 회의.

## NEXT MEETINGS:

## 다음 회의:

## Tuesday, March 4

3월 4일 화요일

6pm - 8pm

## Ramona Hall Metro/East LA

## Wednesday, March 5

## 3월 5일 수요일

6pm - 8pm

## Wilmington Rec Center (RC) Harbor

## Thursday, March 6

3월 6일 목요일

6pm - 8pm

**Algin Sutton RC**  
**Pacific/South LA**

## Saturday, March 8

3월 8일 토요일

10am - 12pm

**Victory Vineland RC**  
Valley Center/East LA

## Tuesday, March 11

3월 11일 화요일

6pm - 8pm

## Tarzana RC (in Child Care Center) Valley

## Thursday, March 13

3월 13일 목요일

6pm - 8pm

**Westchester RC**  
West LA

## Saturday, March 15

3월 15일 토요일

10am - 12pm

## Lincoln Park Senior Center Metro/Downtown LA

## Tuesday, March 18

3월 18일 화요일

6pm - 8pm

## Virtual via Zoom

### Virtual a través de Zo

CITY OF LOS ANGELES DEPARTMENT OF RECREATION AND PARKS

# PARK NEEDS ASSESSMENT

The City of Los Angeles Department of Recreation and Parks is launching the first phase of the **Park Needs Assessment**, and we want to hear from you!

Your input will help transform the places where we live, work, and play—**let's make it happen together!**

**GET CONNECTED!**

Scan or visit:  
[needs.parks.cityofla.gov](https://needs.parks.cityofla.gov)  
 or follow us @LACityParksNeeds  
 on Instagram, LinkedIn, Facebook, & YouTube

## HELP SHAPE THE FUTURE OF LOS ANGELES CITY PARKS!

Join us for the first round of community meetings where you can get the inside scoop on the process, share your ideas, and help shape the future of LA's parks and recreation spaces.

<b>Tues, March 4</b> 6:00pm – 8:00pm  <b>Ramona Hall</b> 4580 North Figueroa St Los Angeles, CA 90065	<b>Wed, March 5</b> 6:00pm – 8:00pm  <b>Wilmington Rec Center</b> 325 N. Neptune Ave. Wilmington, CA 90744	<b>Thur, March 6</b> 6:00pm – 8:00pm  <b>Ajain Sutton Rec Center</b> 6550 S Hoover St Los Angeles, CA 90044	<b>Sat, March 8</b> 10:00am – 12:00pm  <b>Victory Vineland Rec Center</b> 1117 Victory Blvd North Hollywood, CA 91606
<b>Tues, March 11</b> 6:00pm – 8:00pm  <b>Tarzana Rec Center (in Child Care Center)</b> 5700 Beckford Ave Tarzana, CA 91356	<b>Thur, March 13</b> 6:00pm – 8:00pm  <b>Westchester Rec Center</b> 7000 W. Manchester Ave Los Angeles, CA 90045	<b>Sat, March 15</b> 10:00am – 12:00pm  <b>Lincoln Park Senior Center</b> 3501 Valley Blvd Los Angeles, CA 90031	<b>Tues, March 18</b> 6:00pm – 8:00pm  <b>Virtual via Zoom</b> <a href="https://bit.ly/lapnnavirtualmeeting318">bit.ly/lapnnavirtualmeeting318</a>

Sign language interpreters, assistive listening devices, or any auxiliary aides and/or services may be provided upon request. To ensure availability, you are advised to make your request at least 72 hours prior to the meeting. For additional information, please contact this project team at [LACityParkNeeds@thedivisionoflra.com](mailto:LACityParkNeeds@thedivisionoflra.com).



# SURVEY

설문 조사

## NEXT STEPS

다음 단계

The survey will gather initial feedback about park and recreation priorities.

설문 조사는 공원과 레크리에이션 우선순위에 대한 초기 피드백을 수집합니다.

Take the survey and share it with your friends and neighbors!



설문에 참여하고 친구 및 이웃과 공유하세요!



# WEBSITE

웹사이트

## NEXT STEPS

다음 단계

The project website will be updated with the latest engagement and ways to get involved!

프로젝트 웹사이트는 최신 참여 정보와 참여 방법을 업데이트합니다!

Each area of the city will have an interactive map to learn more about the parks in your neighborhood.

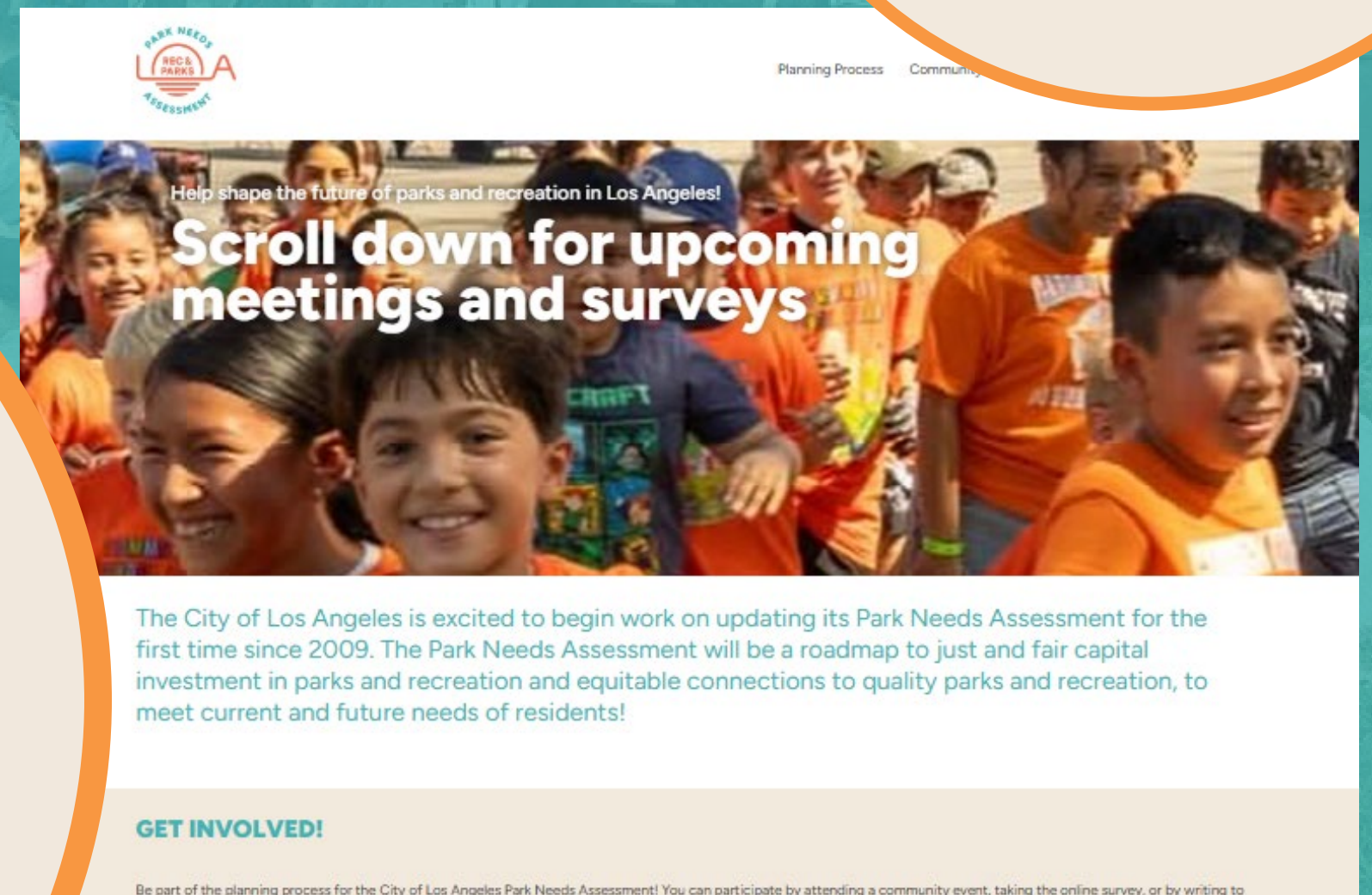
도시의 각 지역은 자신의 동네 공원에 대해 더 알아볼 수 있는 인터랙티브 지도를 제공합니다.

Visit the project website by scanning this QR code:



QR 코드를 스캔하여 프로젝트 웹사이트를 방문하세요.

[needs.parks.lacity.gov](https://needs.parks.lacity.gov)



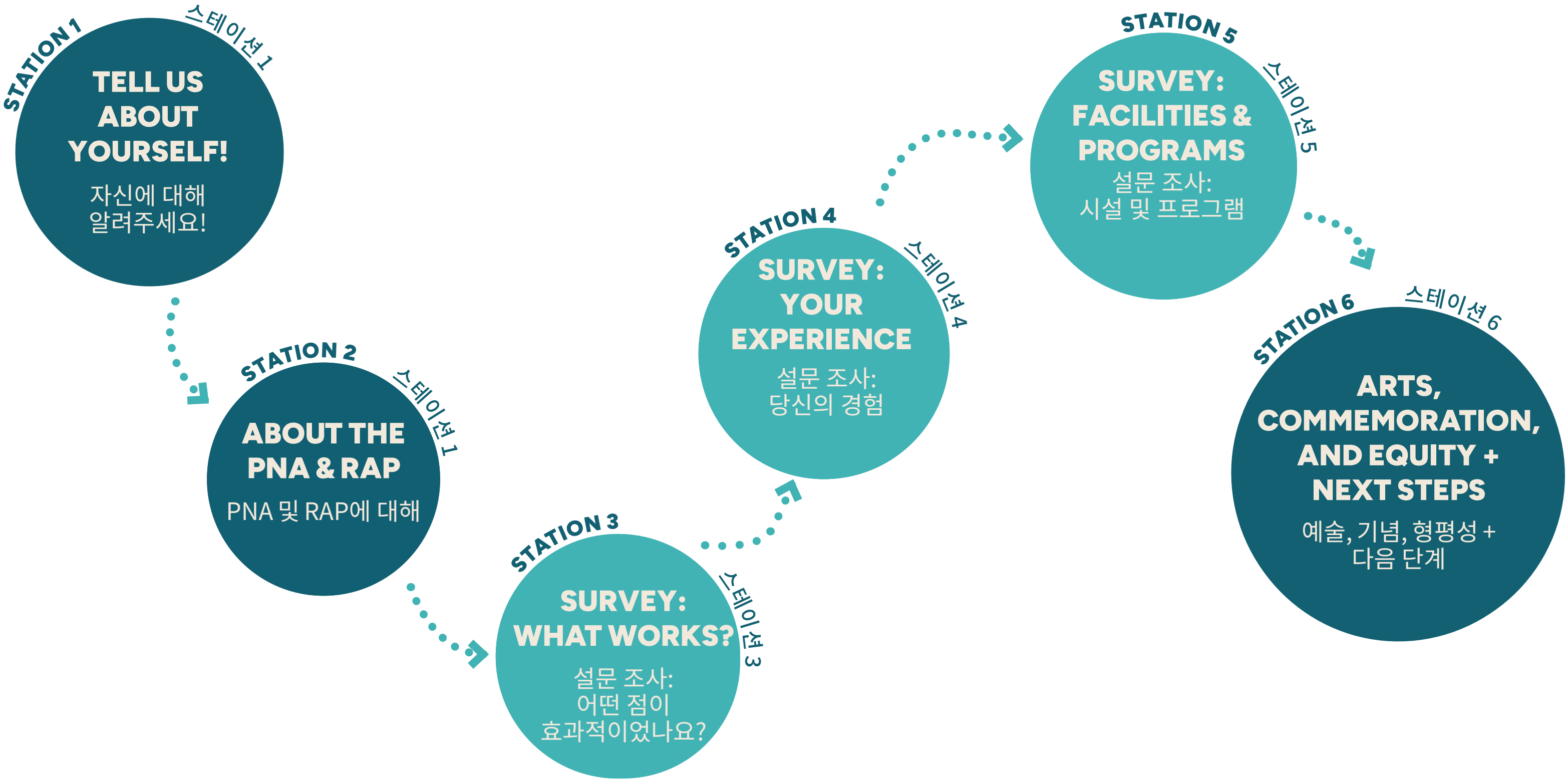


# VISIT THE OPEN HOUSE!

오픈 하우스를 방문하세요!

PROVIDE FEEDBACK ON YOUR EXPERIENCES AT LA PARKS

LA 공원에서의 경험에 대한 피드백을 제공하세요.





FOR MORE INFORMATION CONTACT | 더 많은 정보가 필요하시면 연락주세요:  
**CITY OF LOS ANGELES | DEPARTMENT OF RECREATION AND PARKS**

---

**Email: [LACityParksNeeds@theolinstudio.com](mailto:LACityParksNeeds@theolinstudio.com)**

**Website: [needs.parks.lacity.gov](https://needs.parks.lacity.gov)**

 **@LACityParksNeeds**

**OLIN**

THE ROBERT GROUP | KOUNKUEY DESIGN INITIATIVE | AGENCY: ARTIFACT | ESTOLANO ADVISORS  
BETTER WORLD GROUP | GEOSYNTEC CONSULTANTS | HR&A ADVISORS | WEST OF WEST | GREENINFO NETWORK  
LANDAU DESIGN + TECHNOLOGY | DHARAM CONSULTING | CALVADA SURVEYING | ETC INSTITUTE

**DRAFT**