



CITY OF LOS ANGELES
DEPARTMENT OF RECREATION AND PARKS

PARK NEEDS ASSESSMENT

PHASE 1 SURVEY RESULTS

SPRING 2025

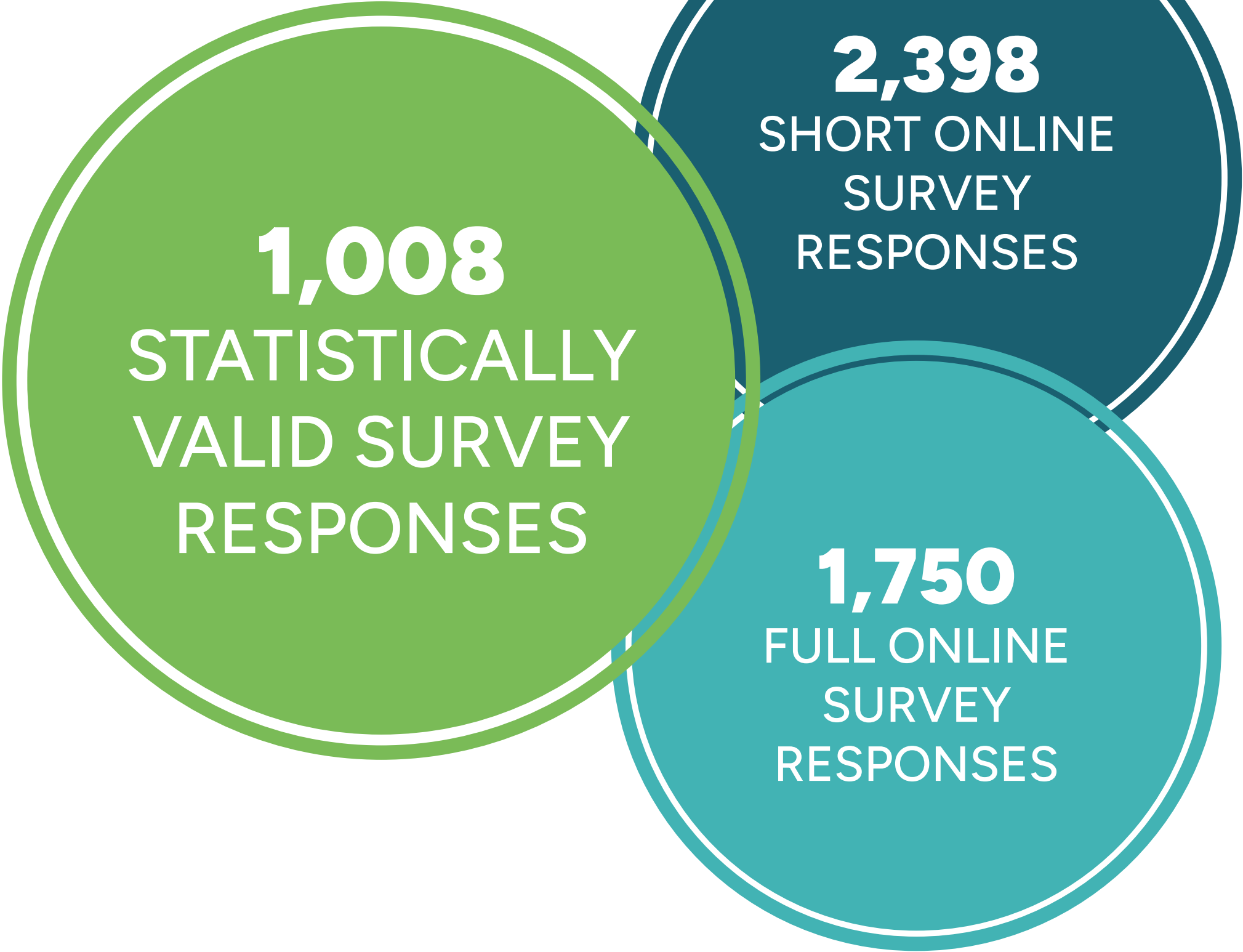
OLIN

THE ROBERT GROUP | KOUNKUEY DESIGN INITIATIVE | AGENCY: ARTIFACT | ESTOLANO ADVISORS
BETTER WORLD GROUP | GEOSYNTEC CONSULTANTS | HR&A ADVISORS | WEST OF WEST | GREENINFO NETWORK
LANDAU DESIGN + TECHNOLOGY | DHARAM CONSULTING | CALVADA SURVEYING | ETC INSTITUTE

LA Park Needs Assessment

PHASE 1 SURVEY RESPONSES

ONLINE AND STATISTICALLY VALID SURVEY RESPONSES



The statistically valid survey
represents a **representative
sample of the population** in each
council district in the City of LA.

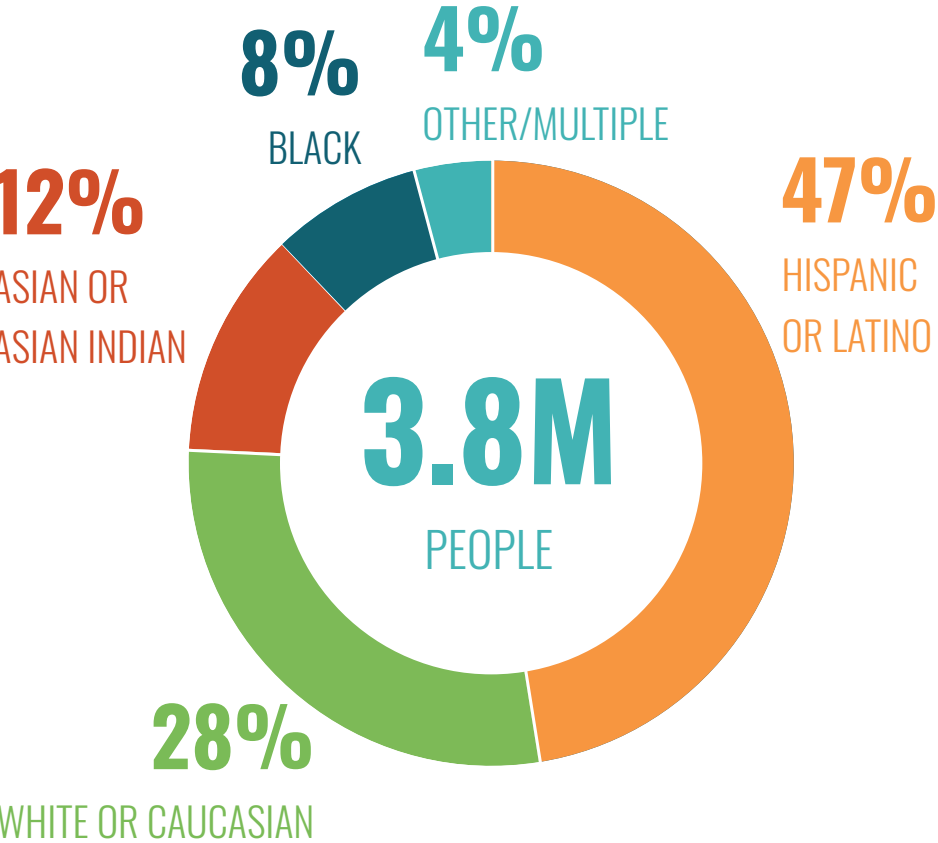


LA Park Needs Assessment
PHASE 1 SURVEY RESPONSES

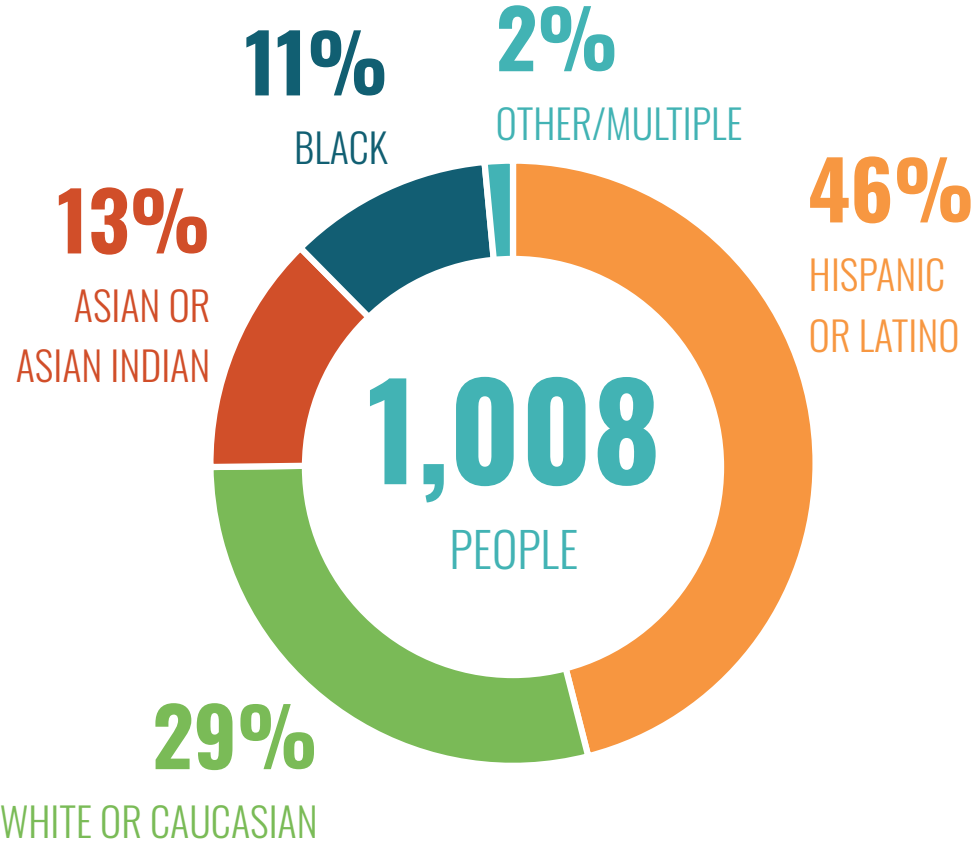
TAKEAWAYS: ABOUT YOU

THE DEMOGRAPHIC MAKEUP OF THE STATISTICALLY VALID SURVEY’S RESPONDENTS CLOSELY MATCH THAT OF THE CITY.

CITY OF LOS ANGELES

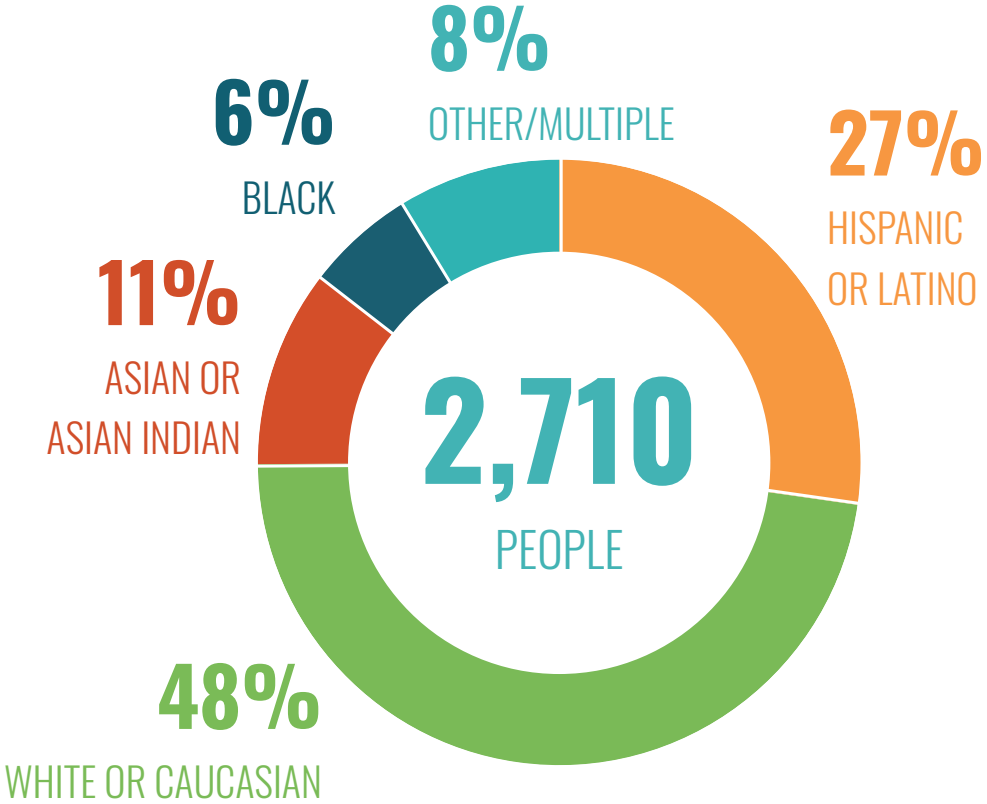


STATISTICALLY VALID SURVEY

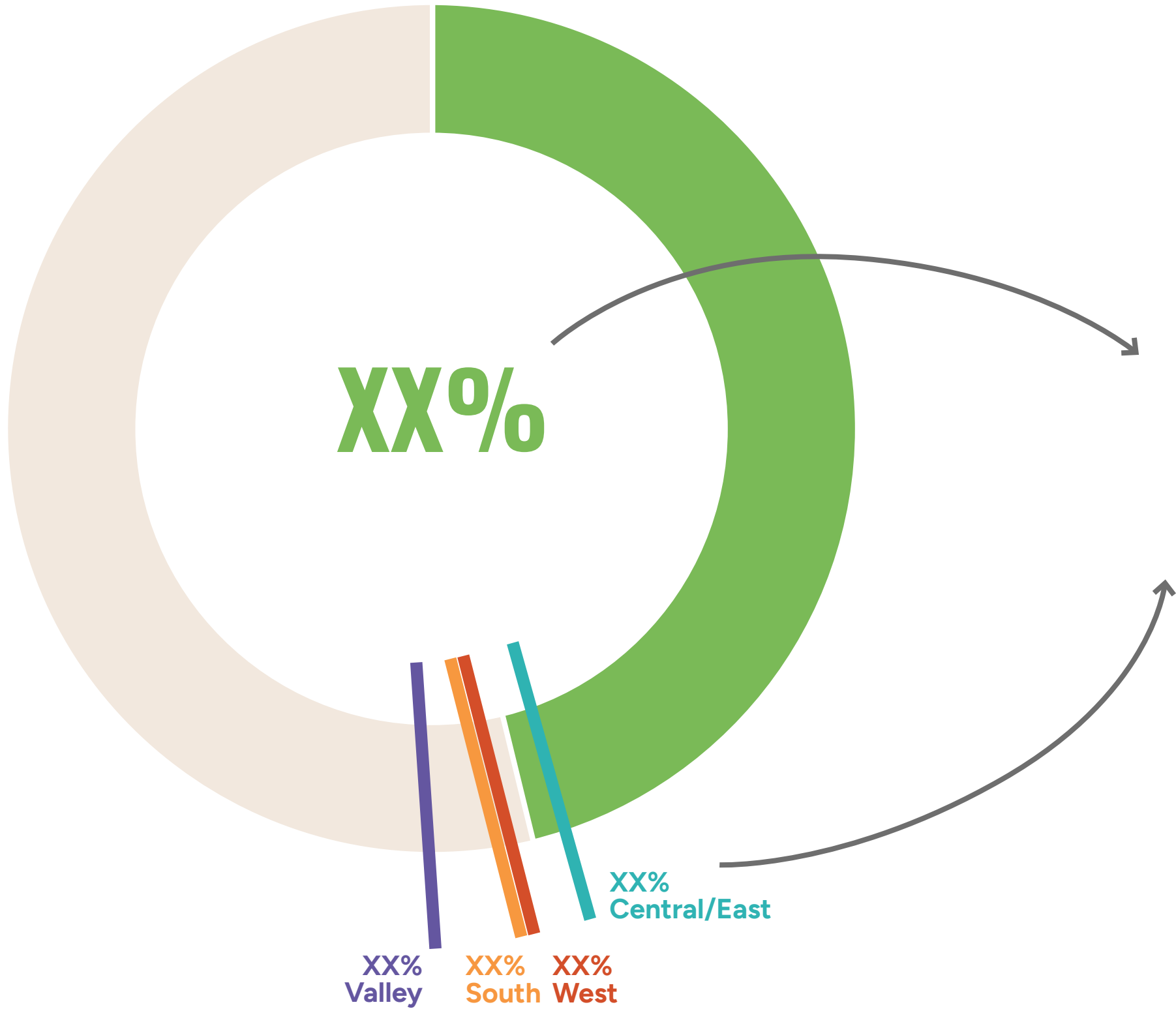


ONLINE SURVEY

OF THE 4,148 RESPONDENTS, 3,743 REPORTED THAT THEY LIVE WITHIN AN LA ZIP CODE.



WHICH OF THE FOLLOWING BEST DESCRIBES YOUR RACE/ETHNICITY?



Tabs at the top of each slide show which survey source the content came from.

Each tick mark represents a different region. The percentage shown should be compared to the statistic shown in the middle of the pie chart.

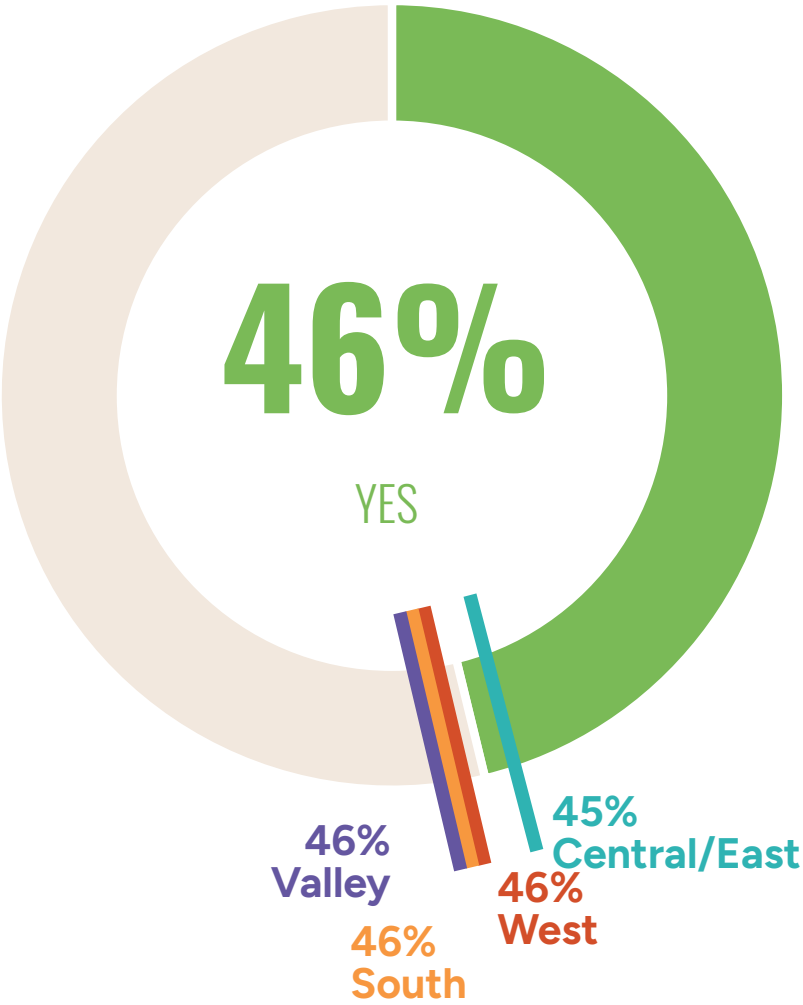
- Central/East
- West
- South
- Valley

TAKEAWAYS: QUICK TAKES

LESS THAN HALF OF RESPONDENTS FEEL THAT THERE ARE ENOUGH PARKS AND/OR RECREATION CENTERS WITHIN WALKING DISTANCE OF THEIR HOME.

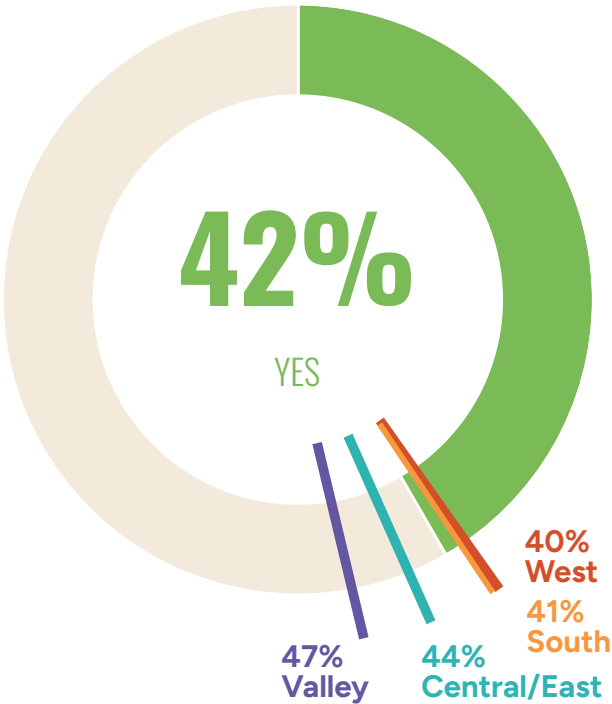
STATISTICALLY VALID SURVEY

990 Total Respondents



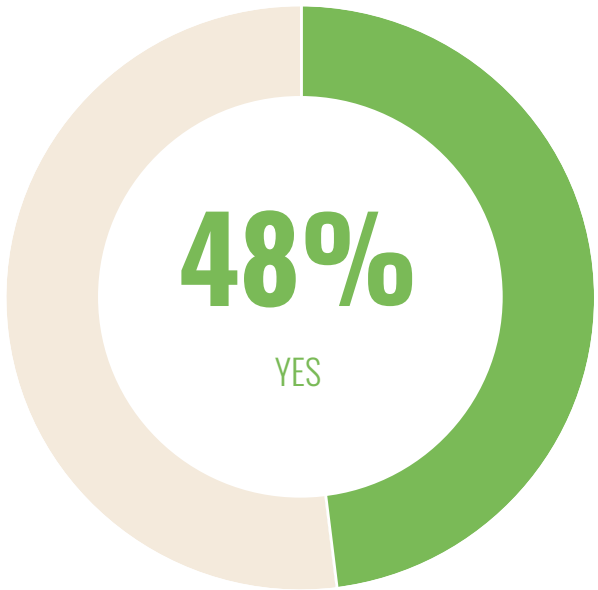
ONLINE SURVEY

4,097 Total Respondents



IN-PERSON ENGAGEMENT

52 Total Respondents



DO YOU FEEL THERE ARE ENOUGH PARKS AND/OR RECREATION CENTERS WITHIN WALKING DISTANCE OF YOUR HOME?

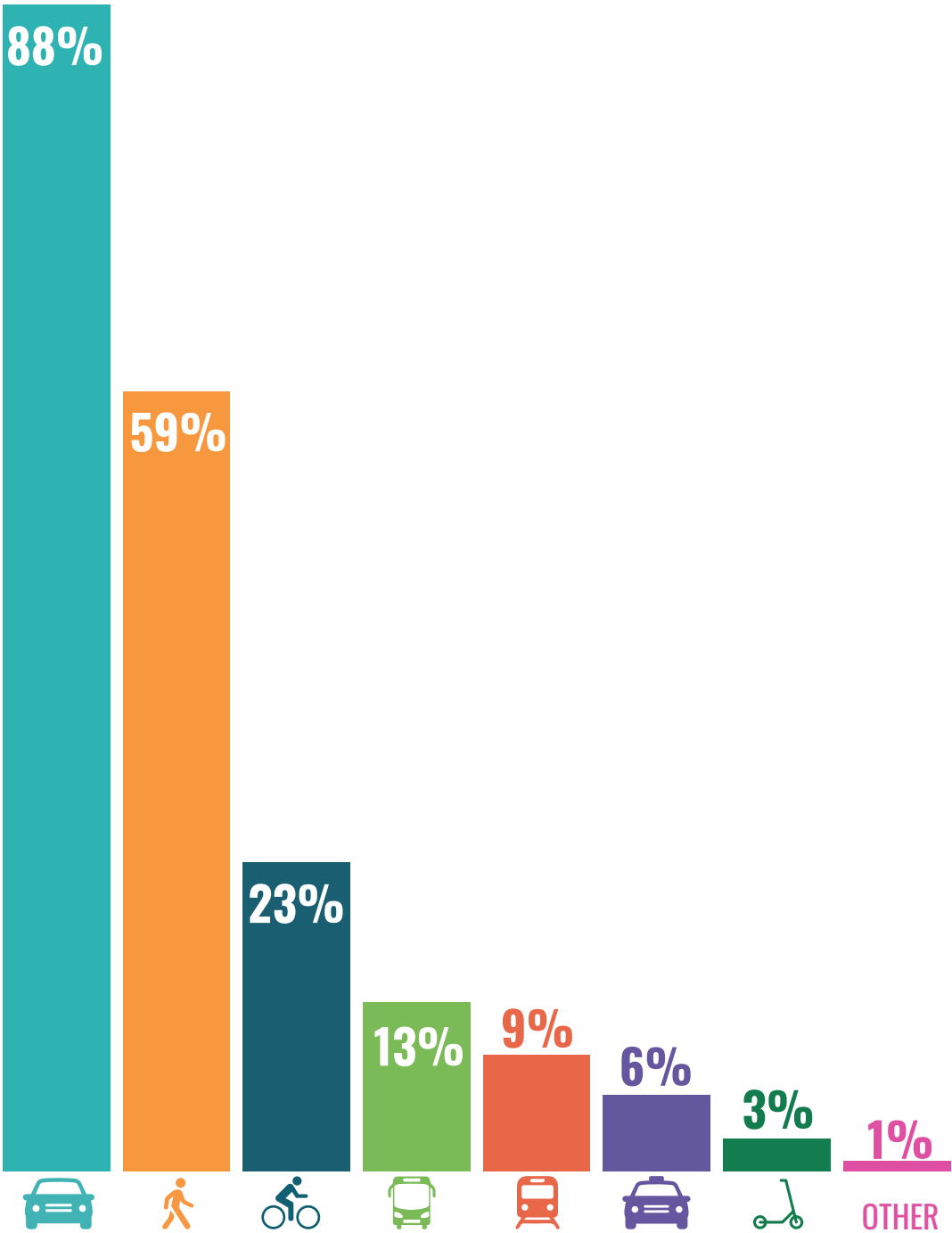
LA Park Needs Assessment

PHASE 1 SURVEY RESPONSES

TAKEAWAYS: QUICK TAKES

THE MAJORITY OF RESPONDENTS TYPICALLY DRIVE OR WALK TO PARKS & RECREATION CENTERS.

1,990 Total Responses



- Car
- Walk
- Bike
- Bus
- Rail
- Taxi or Carshare
- Dockless Scooter/Bike
- Other

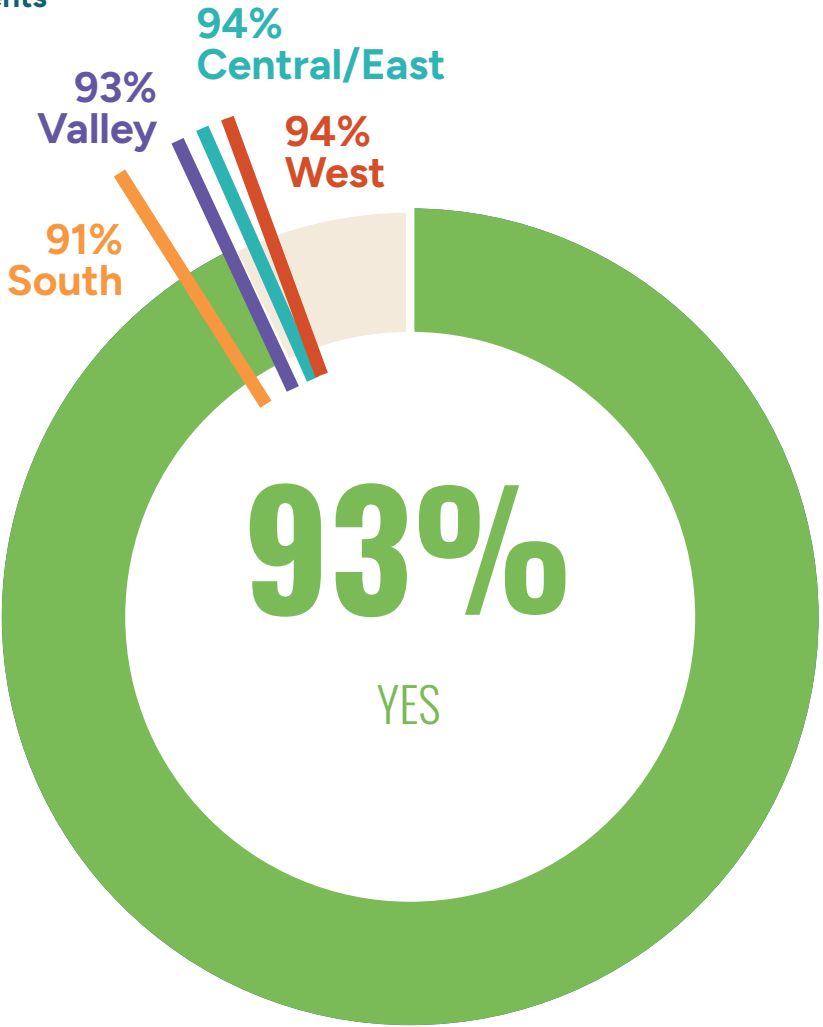
PLEASE CHECK ALL THE WAYS YOU TYPICALLY TRAVEL TO THE PARKS AND RECREATION CENTERS THAT YOU USE.

TAKEAWAYS: QUICK TAKES

MOST RESPONDENTS HAVE VISITED A CITY OF LA PARK IN THE PAST YEAR, WHILE ONLY ABOUT HALF HAVE VISTED A CITY OF LA RECREATION CENTER.

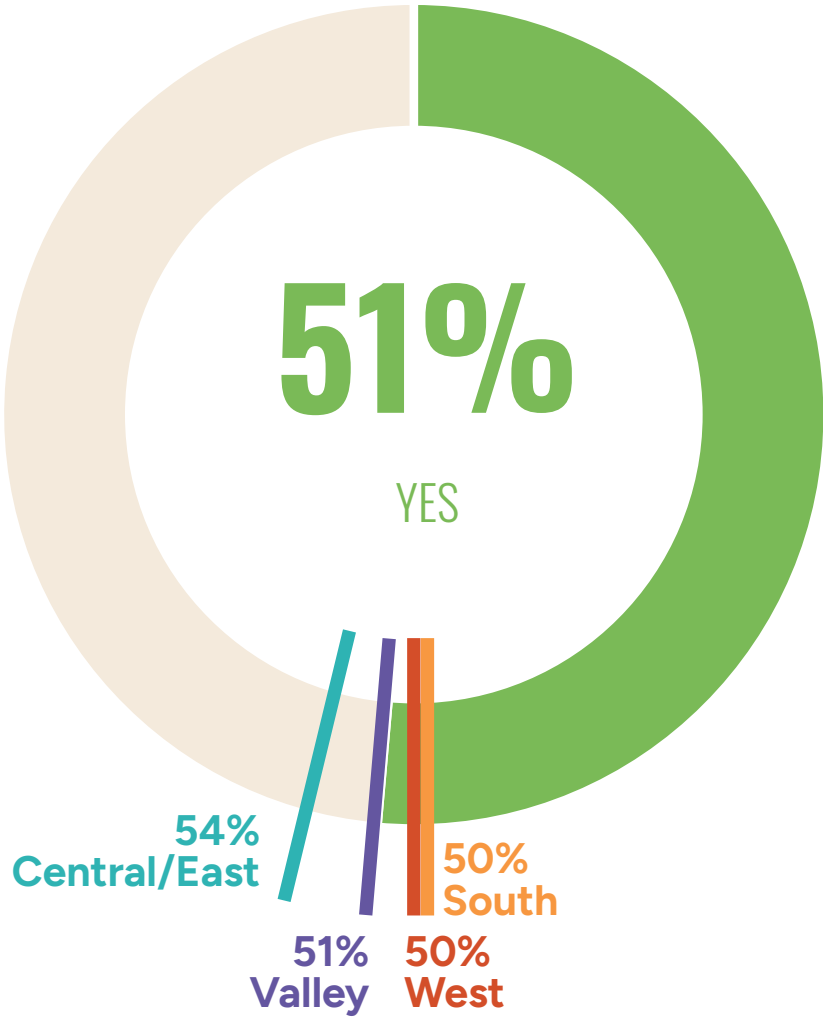
PARKS

1,008 Total Respondents



RECREATION CENTERS

1,008 Total Respondents

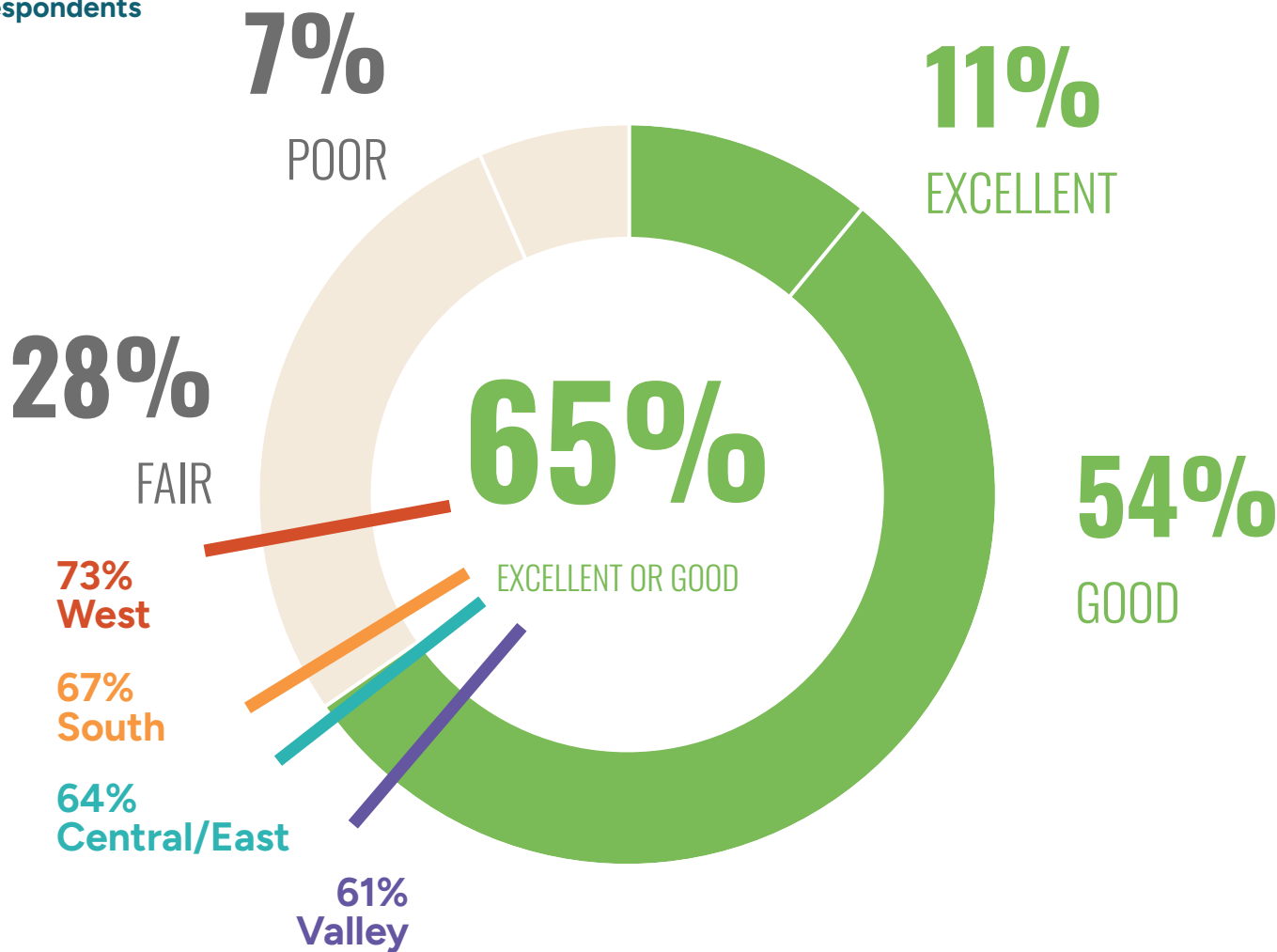


HAVE YOU VISITED ANY PARKS AND RECREATION CENTERS OFFERED BY CITY RECREATION & PARKS IN PAST 12 MONTHS?

NEARLY TWO THIRDS OF RESPONDENTS THINK PARKS ARE IN EXCELLENT OR GOOD CONDITION.

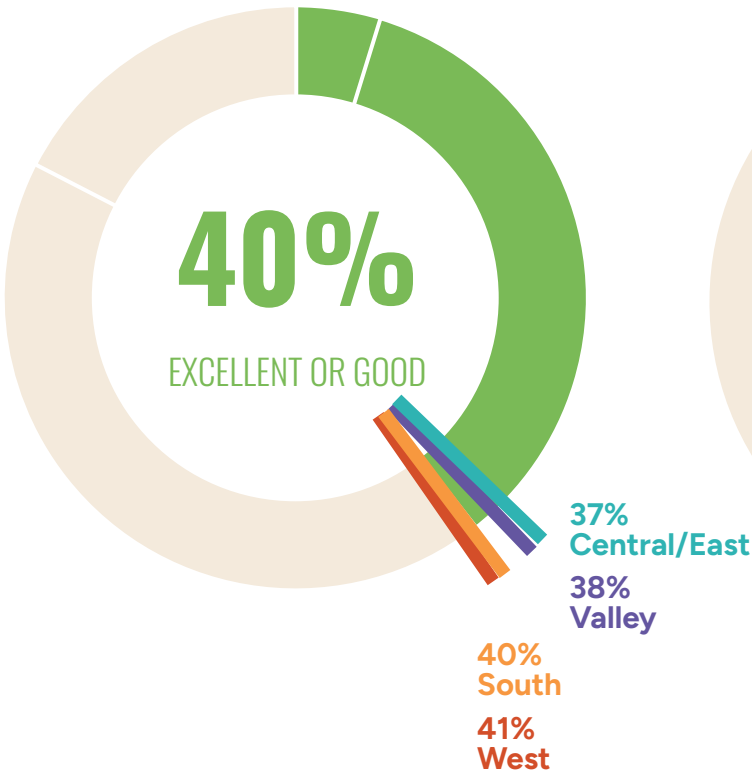
STATISTICALLY VALID SURVEY

932 Total Respondents



ONLINE SURVEY

4,104 Total Respondents



IN-PERSON ENGAGEMENT

53 Total Respondents

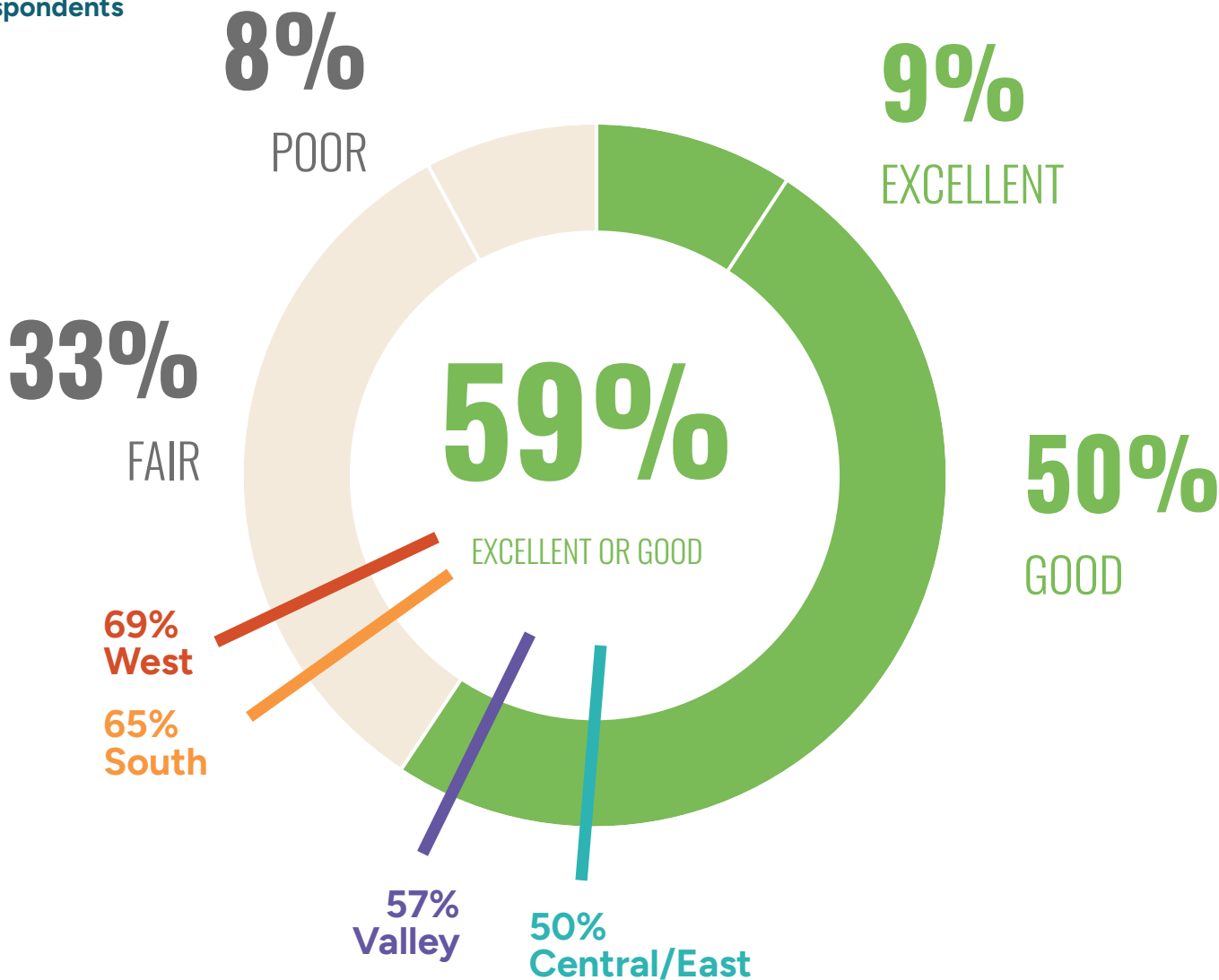


TAKEAWAYS: QUICK TAKES

MORE THAN HALF OF RESPONDENTS THINK RECREATION CENTERS ARE IN EXCELLENT OR GOOD CONDITION.

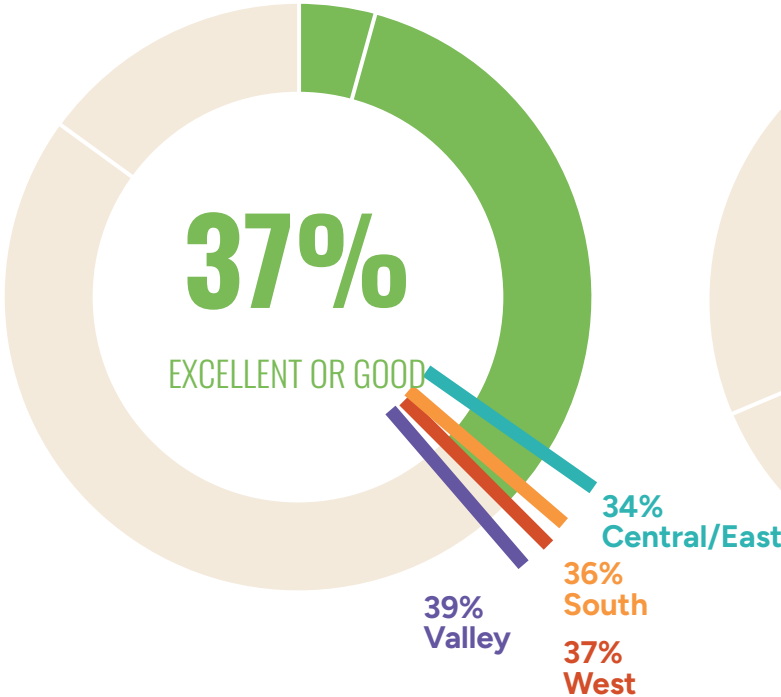
STATISTICALLY VALID SURVEY

518 Total Respondents



ONLINE SURVEY

4,011 Total Respondents



IN-PERSON ENGAGEMENT

41 Total Respondents



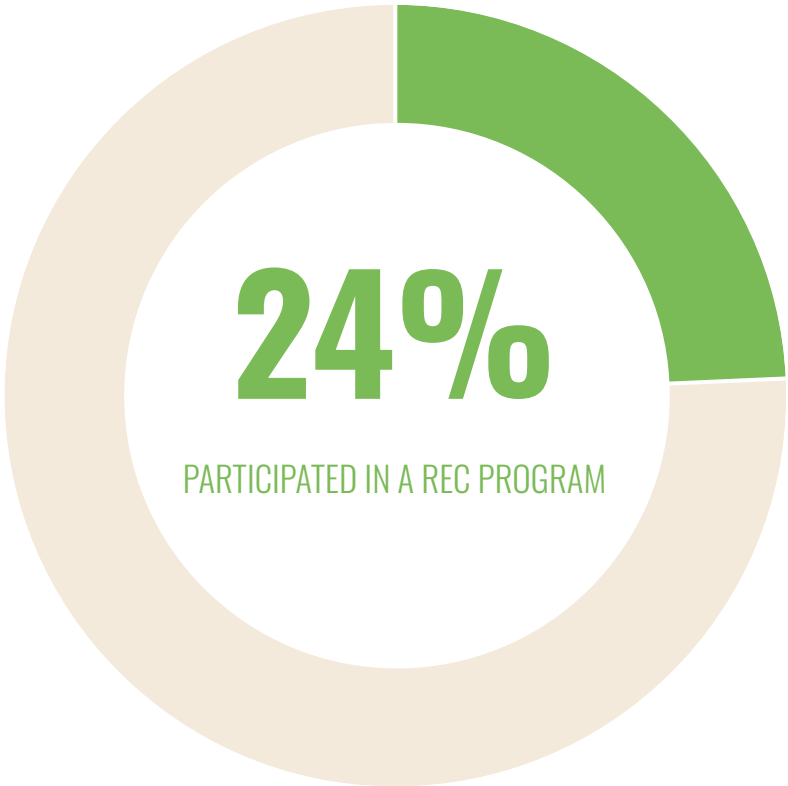
HOW WOULD YOU RATE THE PHYSICAL CONDITION OF LOS ANGELES RECREATION CENTERS?

TAKEAWAYS: QUICK TAKES

ABOUT ONE IN FOUR RESPONDENTS HAVE PARTICIPATED IN A RECREATION PROGRAM IN THE PAST YEAR.

STATISTICALLY VALID SURVEY

1,008 Total Respondents



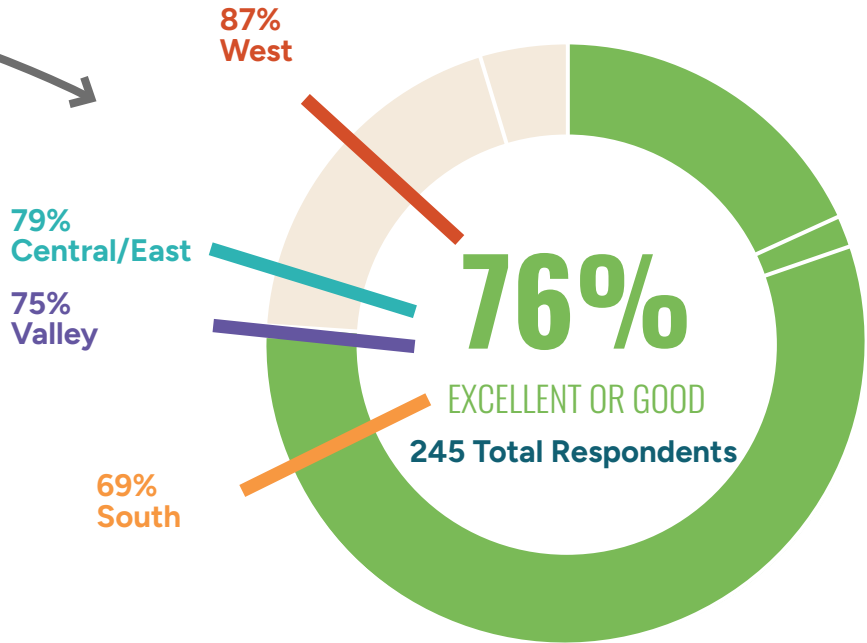
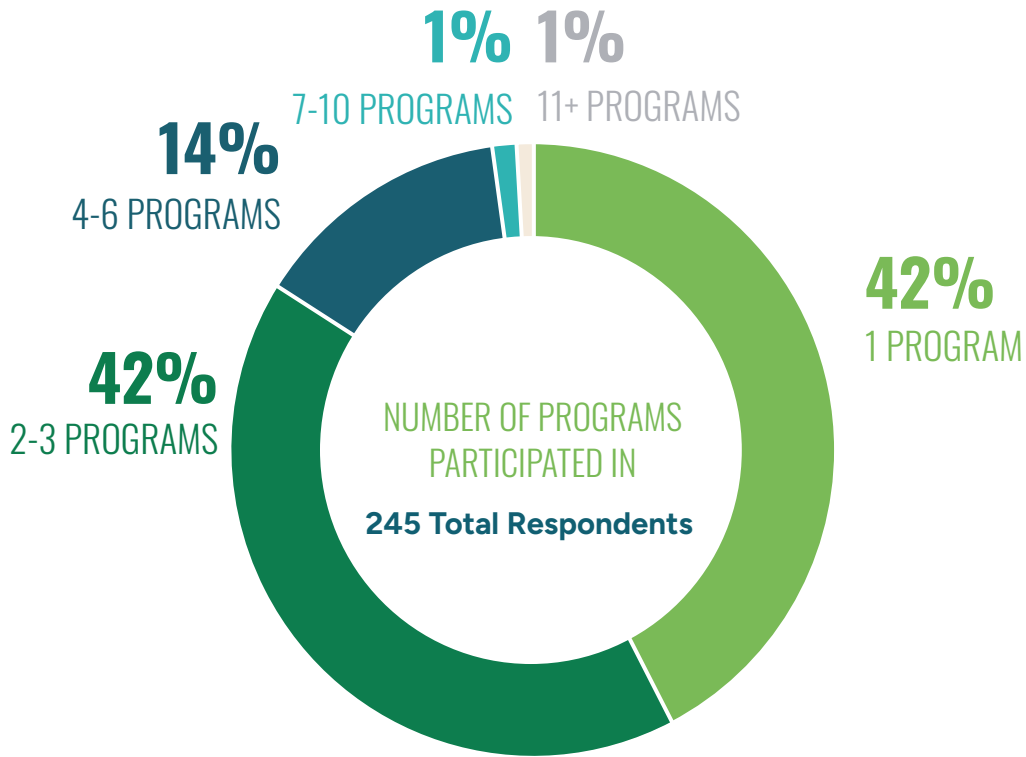
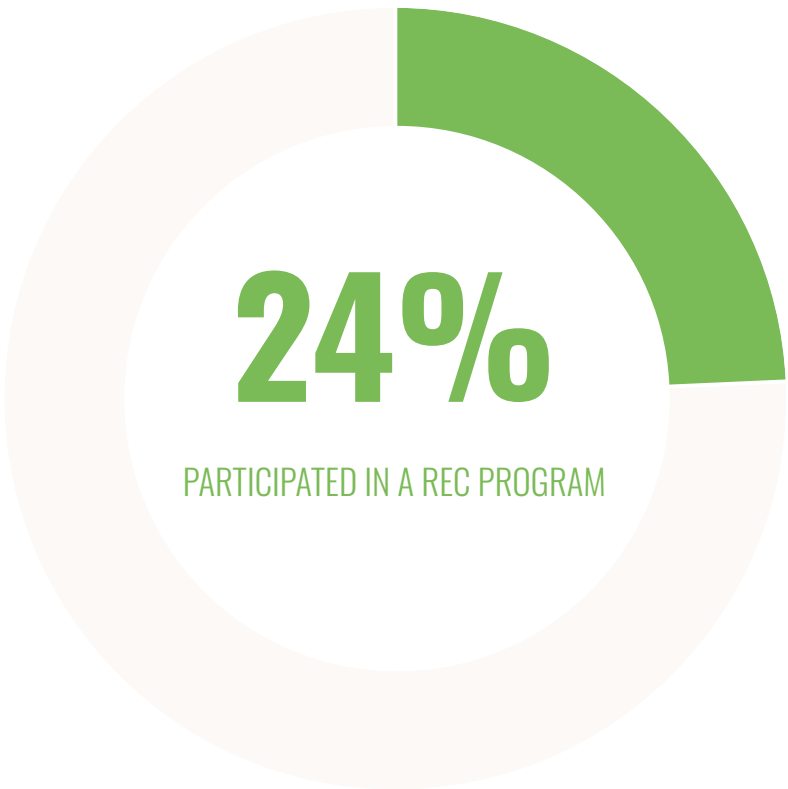
HOW MANY PROGRAMS HAVE YOU PARTICIPATED IN DURING THE PAST 12 MONTHS?

TAKEAWAYS: QUICK TAKES

OF THOSE THAT PARTICIPATED, OVER 75% RATED THE QUALITY OF RECREATION PROGRAMS AS EXCELLENT OR GOOD.

STATISTICALLY VALID SURVEY

1,008 Total Respondents

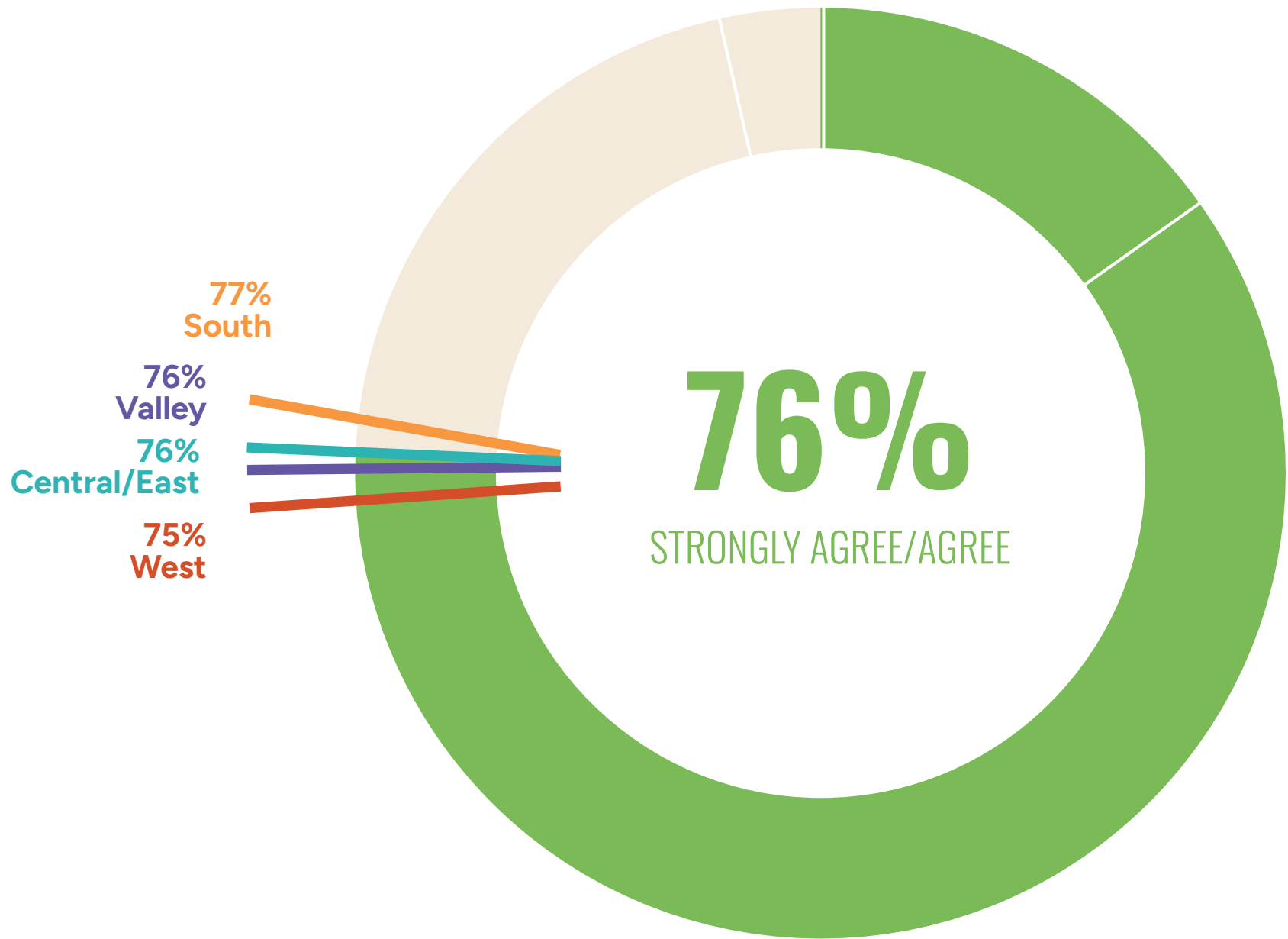


HOW WOULD YOU RATE OVERALL QUALITY OF ALL RECREATION PROGRAMS YOUR HOUSEHOLD MEMBERS HAVE PARTICIPATED?

TAKEAWAYS: QUICK TAKES

MORE THAN 3/4 OF RESPONDENTS AGREE THAT RECREATION OR PARK FACILITIES ARE AVAILABLE WHEN THEY WANT TO USE THEM.

1,008 Total Respondents

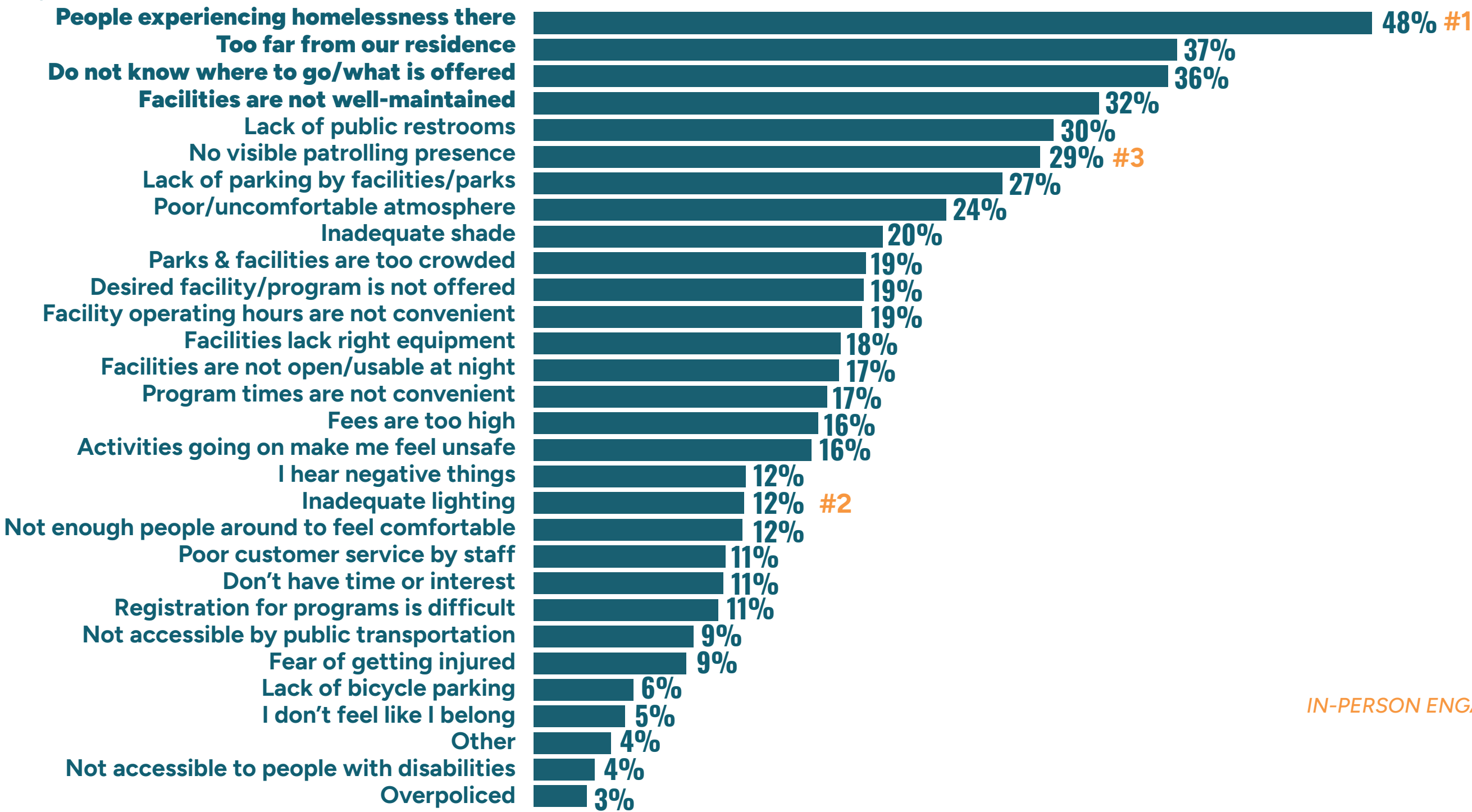


PLEASE RATE YOUR LEVEL OF AGREEMENT WITH THE FOLLOWING STATEMENT: RECREATION OR PARKS FACILITIES ARE ALWAYS AVAILABLE WHEN I WANT TO USE THEM.

TAKEAWAYS: QUICK TAKES

PEOPLE EXPERIENCING HOMELESSNESS IS THE MOST COMMON REASON RESPONDENTS DO NOT VISIT.

5,330 Total Responses

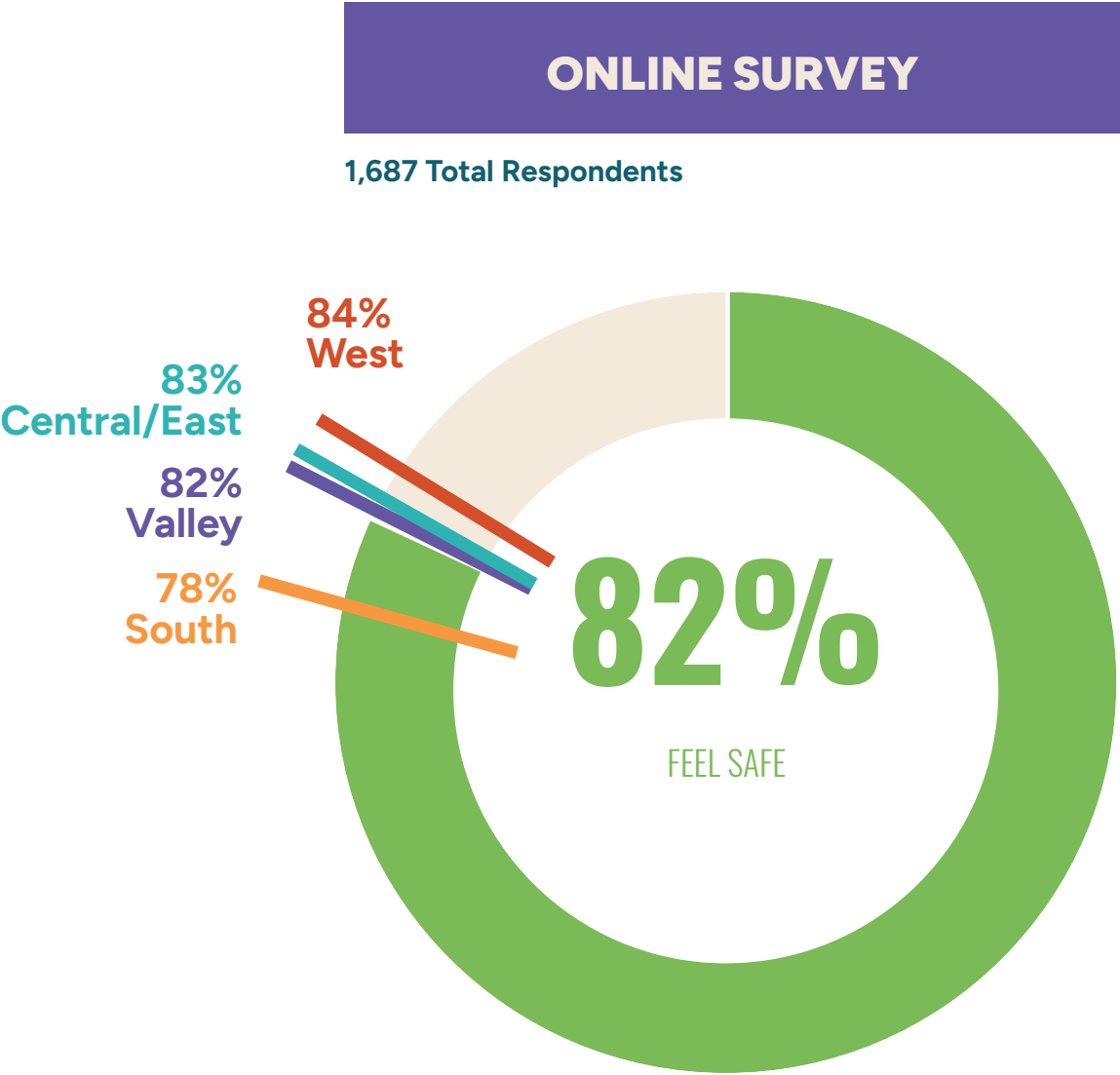


IN-PERSON ENGAGEMENT

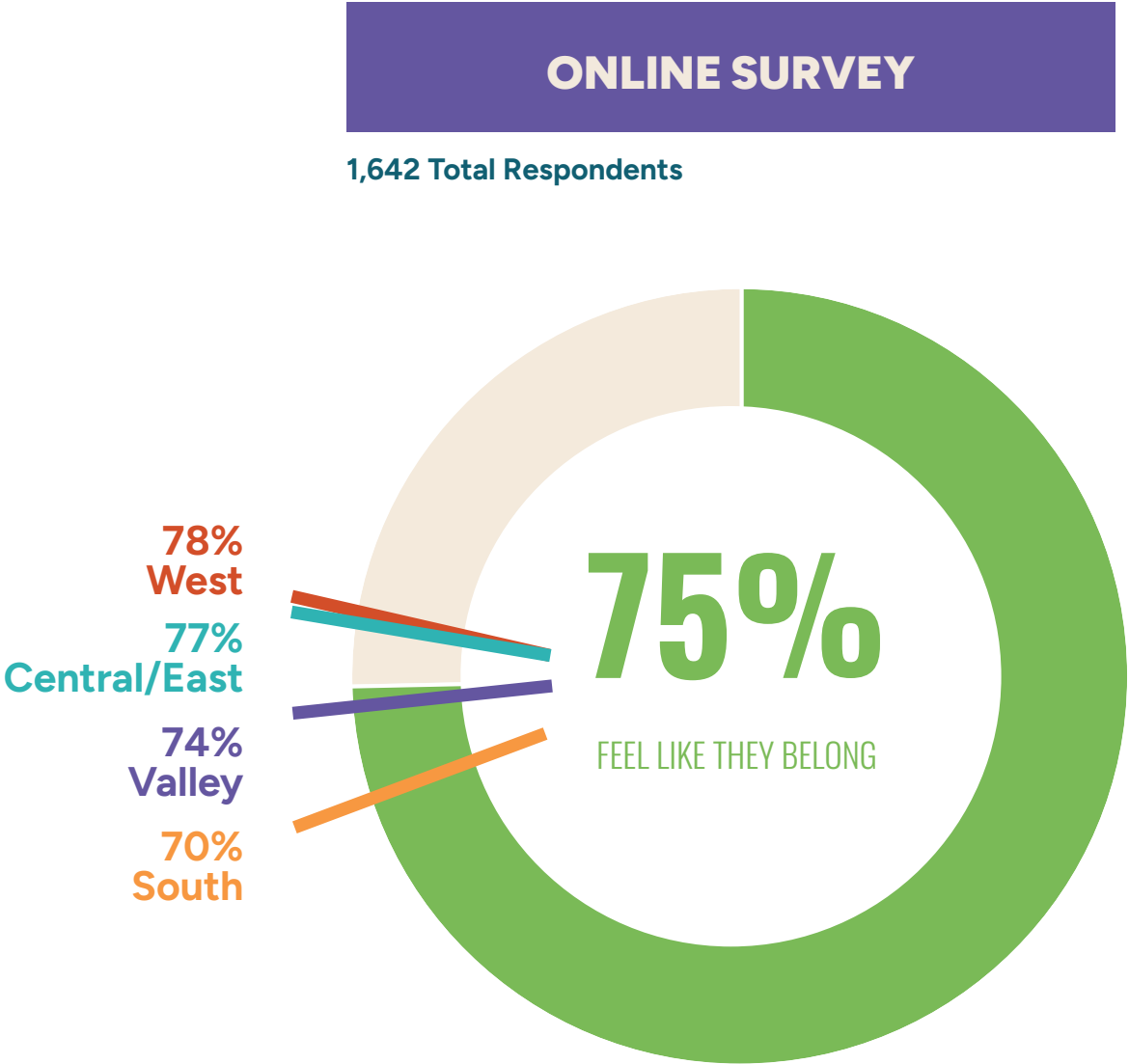
PLEASE CHECK ALL THE REASONS THAT PREVENT YOU OR MEMBERS OF YOUR HOUSEHOLD FROM VISITING PARKS AND RECREATION CENTERS MORE OFTEN.

TAKEAWAYS: QUICK TAKES

MORE THAN 3/4 OF ONLINE RESPONDENTS FEEL SAFE AND/OR FEEL LIKE THEY BELONG IN AT LEAST ONE PARK OR RECREATION FACILITY.



IS THERE AT LEAST ONE PARK OR RECREATION FACILITY IN LOS ANGELES WHERE YOU FEEL SAFE?

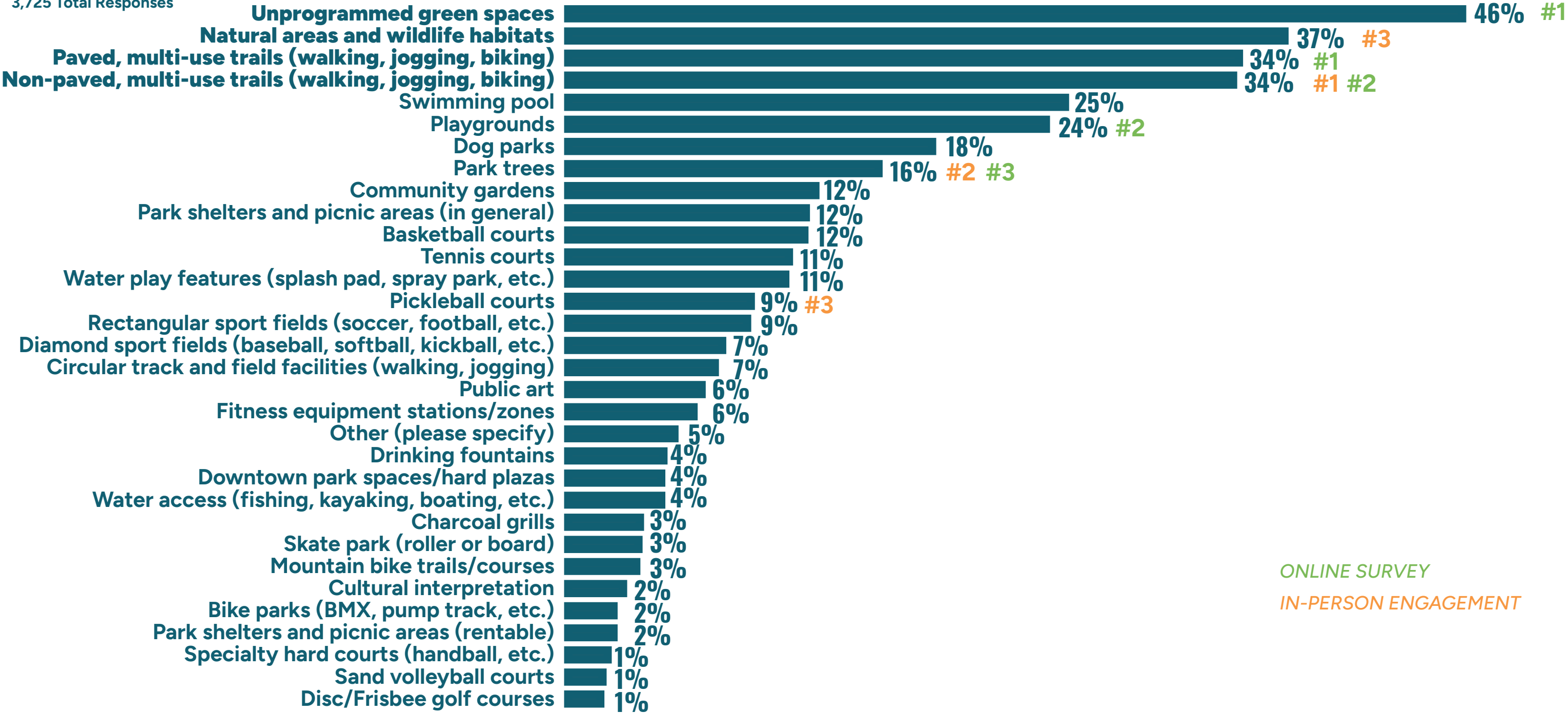


IS THERE AT LEAST ONE PARK OR RECREATION FACILITY IN LOS ANGELES WHERE YOU FEEL LIKE YOU BELONG?

TAKEAWAYS: OUTDOOR FACILITIES

UNPROGRAMMED GREEN SPACES, NATURAL AREAS, AND MULTI-USE TRAILS (PAVED AND NON-PAVED) ARE THE MOST IMPORTANT OUTDOOR FACILITIES TO RESPONDENTS.

3,725 Total Responses



ONLINE SURVEY
IN-PERSON ENGAGEMENT

WHICH FOUR OF THE OUTDOOR FACILITIES LISTED BELOW ARE MOST IMPORTANT TO YOU AND THE MEMBERS OF YOUR HOUSEHOLD?

TAKEAWAYS: OUTDOOR FACILITIES

UNPROGRAMMED GREEN SPACES, NATURAL AREAS, AND MULTI-USE TRAILS (PAVED AND NON-PAVED) ARE THE MOST IMPORTANT OUTDOOR FACILITIES TO RESPONDENTS.

3,725 Total Responses

STATISTICALLY VALID SURVEY

VALLEY

- 1. Unprogrammed green spaces #2
 - 2. Natural areas and wildlife habitats
 - 3. Non-paved, multi-use trail #4
 - 4. Paved, multi-use trails #1
- (#3 - Playgrounds)

CENTRAL/
EAST

- 1. Unprogrammed green spaces #1
 - 2. Natural areas and wildlife habitats
 - 3. Non-paved, multi-use trail #3
 - 4. Paved, multi-use trails; #2
- Swimming pool
(#4 - Park Trees)

WEST

- 1. Unprogrammed green spaces #2
 - 2. Natural areas and wildlife habitats
 - 3. Non-paved, multi-use trail #3
 - 4. Paved, multi-use trails #1
- (#4 - Playgrounds)

SOUTH

- 1. Unprogrammed green spaces
- 2. Paved, multi-use trails #1
- 3. Swimming pool #4
- 4. Natural areas and wildlife habitats; Non-paved, multi-use trail; Playgrounds #3

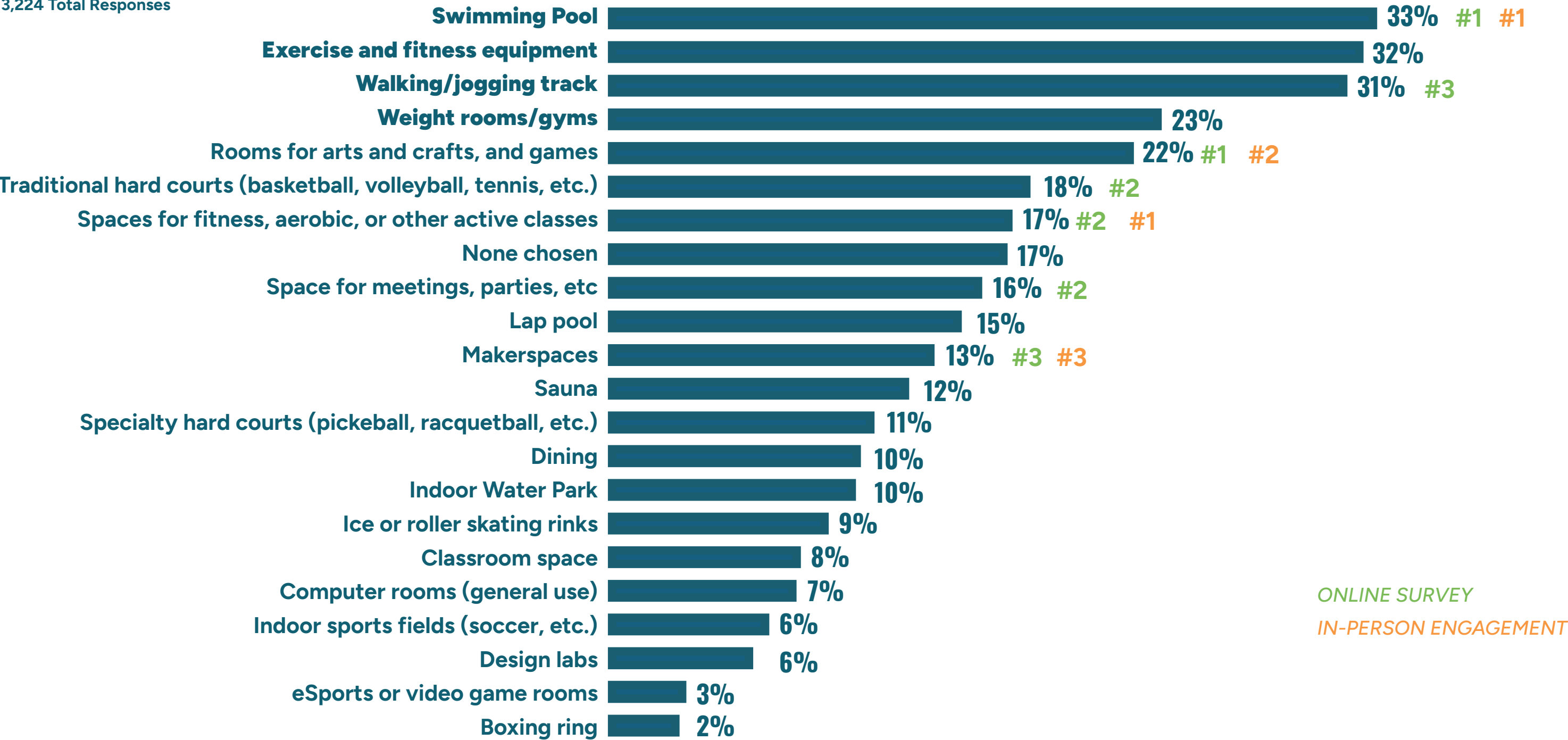
ONLINE SURVEY

WHICH FOUR OF THE OUTDOOR FACILITIES LISTED BELOW ARE MOST IMPORTANT TO YOU AND THE MEMBERS OF YOUR HOUSEHOLD?

TAKEAWAYS: INDOOR FACILITIES

SWIMMING POOLS, EXERCISE AND FITNESS EQUIPMENT, AND WALKING TRACKS ARE THE MOST IMPORTANT INDOOR FACILITIES TO RESPONDENTS.

3,224 Total Responses



WHICH FOUR OF THE INDOOR FACILITIES LISTED BELOW ARE MOST IMPORTANT TO YOU AND THE MEMBERS OF YOUR HOUSEHOLD?

TAKEAWAYS: INDOOR FACILITIES

SWIMMING POOLS, EXERCISE AND FITNESS EQUIPMENT, AND WALKING TRACKS ARE THE MOST IMPORTANT INDOOR FACILITIES TO RESPONDENTS.

3,224 Total Responses

STATISTICALLY VALID SURVEY

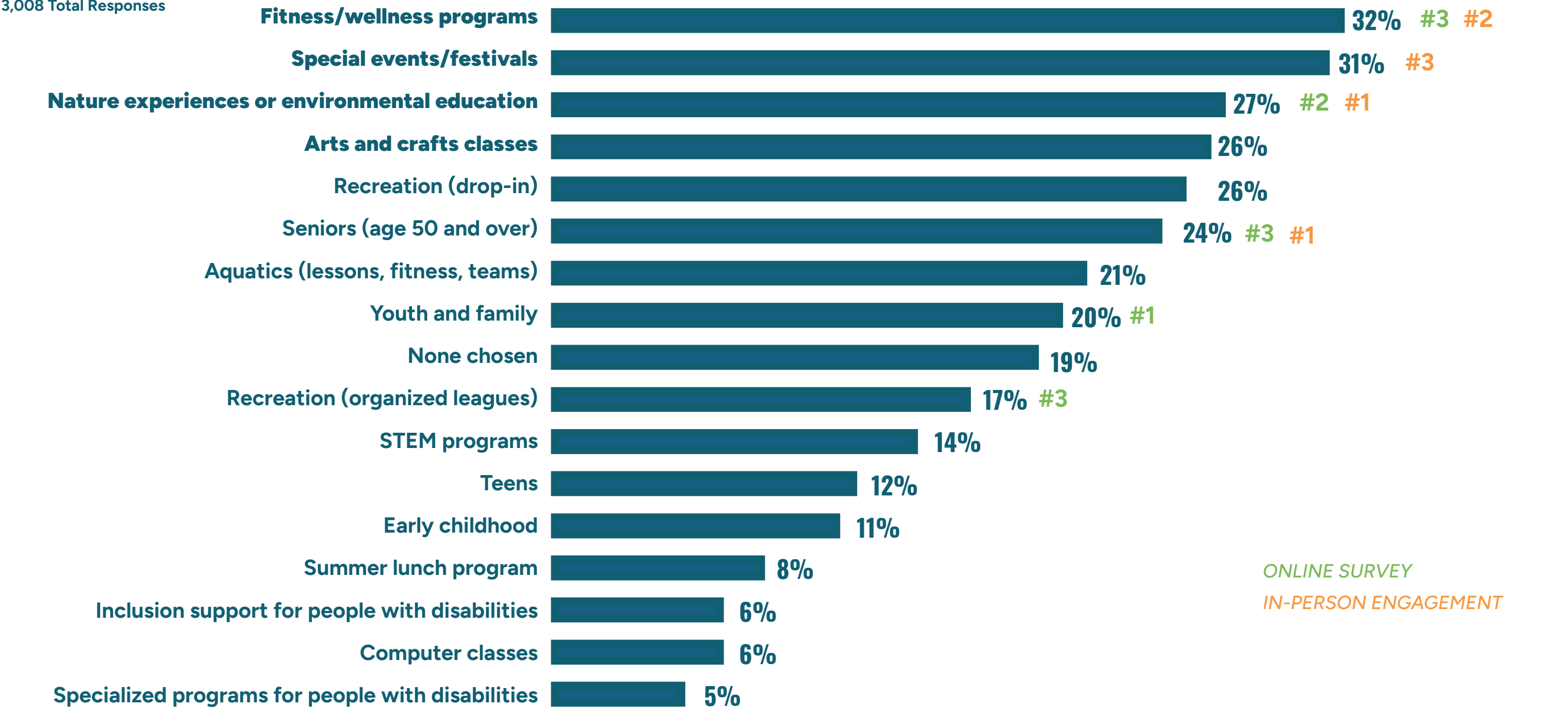
VALLEY	CENTRAL/ EAST	WEST	SOUTH
<div><div>1. Walking/jogging track</div><div>2. Exercise and fitness equipment #3</div><div>3. Swimming Pool #4</div><div>4. Weight rooms/gyms; None chosen</div></div> <div><div>(#1 - Rooms for Arts and Crafts)</div><div>(#2 - Traditional Hard Courts)</div></div>	<div><div>1. Swimming Pool #1</div><div>2. Walking/jogging track</div><div>3. Exercise and fitness equipment #3</div><div>4. Rooms for arts and crafts, and games #2</div></div> <div><div>(#1 - Swimming Pool)</div><div>(#4 - Traditional Hard Courts)</div></div>	<div><div>1. Exercise and fitness equipment</div><div>2. Swimming Pool #1</div><div>3. Weight rooms/gyms</div><div>4. Walking/jogging track</div></div> <div><div>(#2 - Traditional Hard Courts)</div><div>(#3 - Rooms for Arts and Crafts)</div><div>(#4 - Spaces for fitness, aerobic, or other active classes)</div></div>	<div><div>1. Swimming Pool #1</div><div>2. Walking/jogging track</div><div>3. Exercise and fitness equipment #2</div><div>4. Rooms for arts and crafts, and games #3</div></div> <div><div>(#1 - Swimming Pool)</div><div>(#4 - Spaces for fitness, aerobic, or other active classes)</div></div>

ONLINE SURVEY

WHICH FOUR OF THE INDOOR FACILITIES LISTED BELOW ARE MOST IMPORTANT TO YOU AND THE MEMBERS OF YOUR HOUSEHOLD?

FITNESS, FESTIVALS, NATURE EXPERIENCES, AND ARTS AND CRAFTS CLASSES ARE THE MOST IMPORTANT PROGRAMS TO RESPONDENTS.

3,008 Total Responses



ONLINE SURVEY

IN-PERSON ENGAGEMENT

WHICH FOUR OF THE PROGRAMS LISTED BELOW ARE MOST IMPORTANT TO YOU AND THE MEMBERS OF YOUR HOUSEHOLD?

TAKEAWAYS: PROGRAMS

FITNESS, FESTIVALS, NATURE EXPERIENCES, AND ARTS AND CRAFTS CLASSES ARE THE MOST IMPORTANT PROGRAMS TO RESPONDENTS.

3,008 Total Responses

STATISTICALLY VALID SURVEY

VALLEY

1. Special events/festivals
2. Fitness/wellness programs #4
3. Seniors (age 50 and over) #3
4. Arts and crafts classes
- (#1 - Youth and family)
- (#2 - Recreation (organized leagues))

CENTRAL/
EAST

1. Special events/festivals #3
2. Arts and crafts classes
3. Fitness/wellness programs
4. Nature experiences or environmental education #1
- (#2 - Youth and family)
- (#3 - Recreation (organized leagues))

WEST

1. Special events/festivals;
- Fitness/wellness programs #4
3. Nature experiences or environmental education
4. Recreation (drop-in) #1
- (#2 - Youth and family)
- (#3 - Recreation (organized leagues))

SOUTH

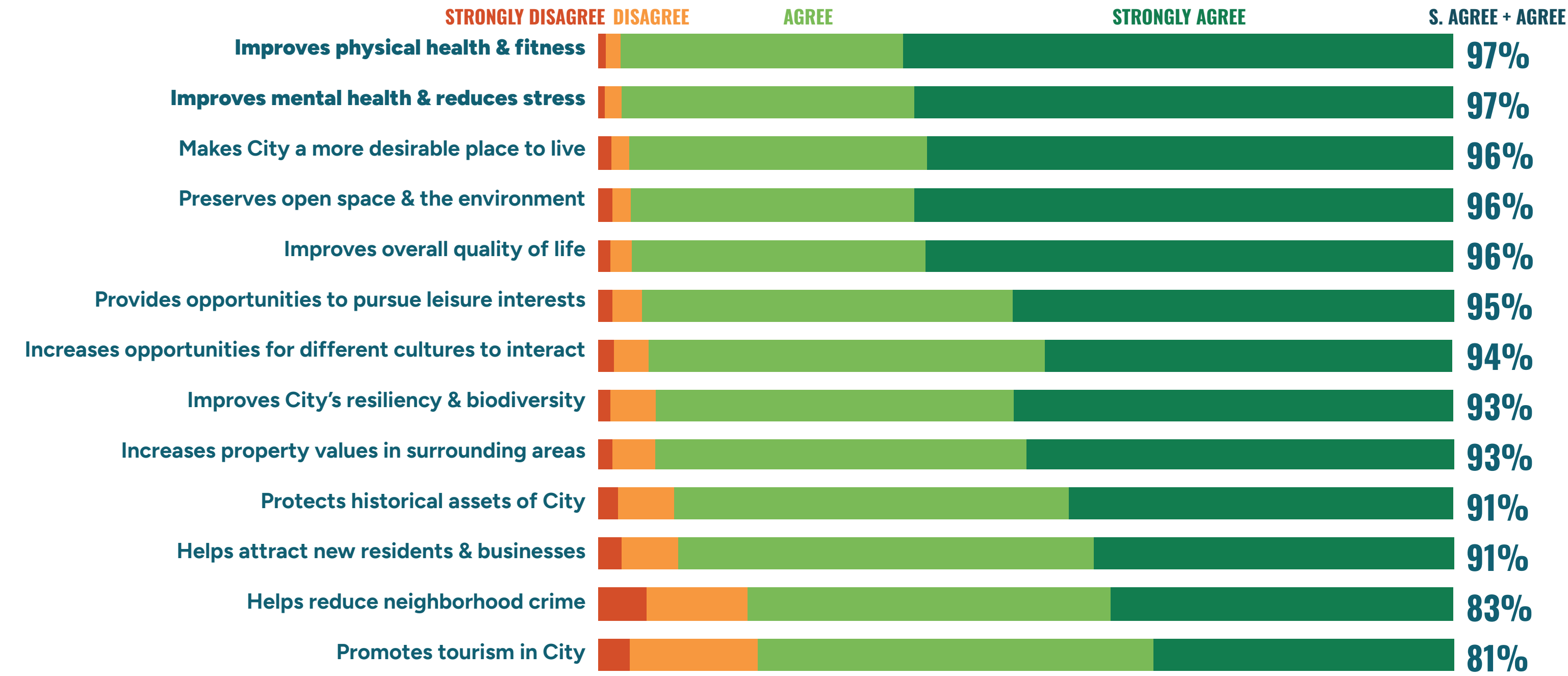
1. Fitness/wellness programs #4
2. Special events/festivals
3. Nature experiences or environmental education; #3
- Recreation (drop-in);
- Arts and crafts classes
- (#1 - Youth and family)
- (#2 - Seniors (age 50 and over))

ONLINE SURVEY

WHICH FOUR OF THE PROGRAMS LISTED BELOW ARE MOST IMPORTANT TO YOU AND THE MEMBERS OF YOUR HOUSEHOLD?

TAKEAWAYS: QUICK TAKES

MOST RESPONDENTS AGREE THAT PARKS, TRAILS, RECREATION FACILITIES, AND PROGRAMS PROVIDE A WIDE RANGE OF BENEFITS.



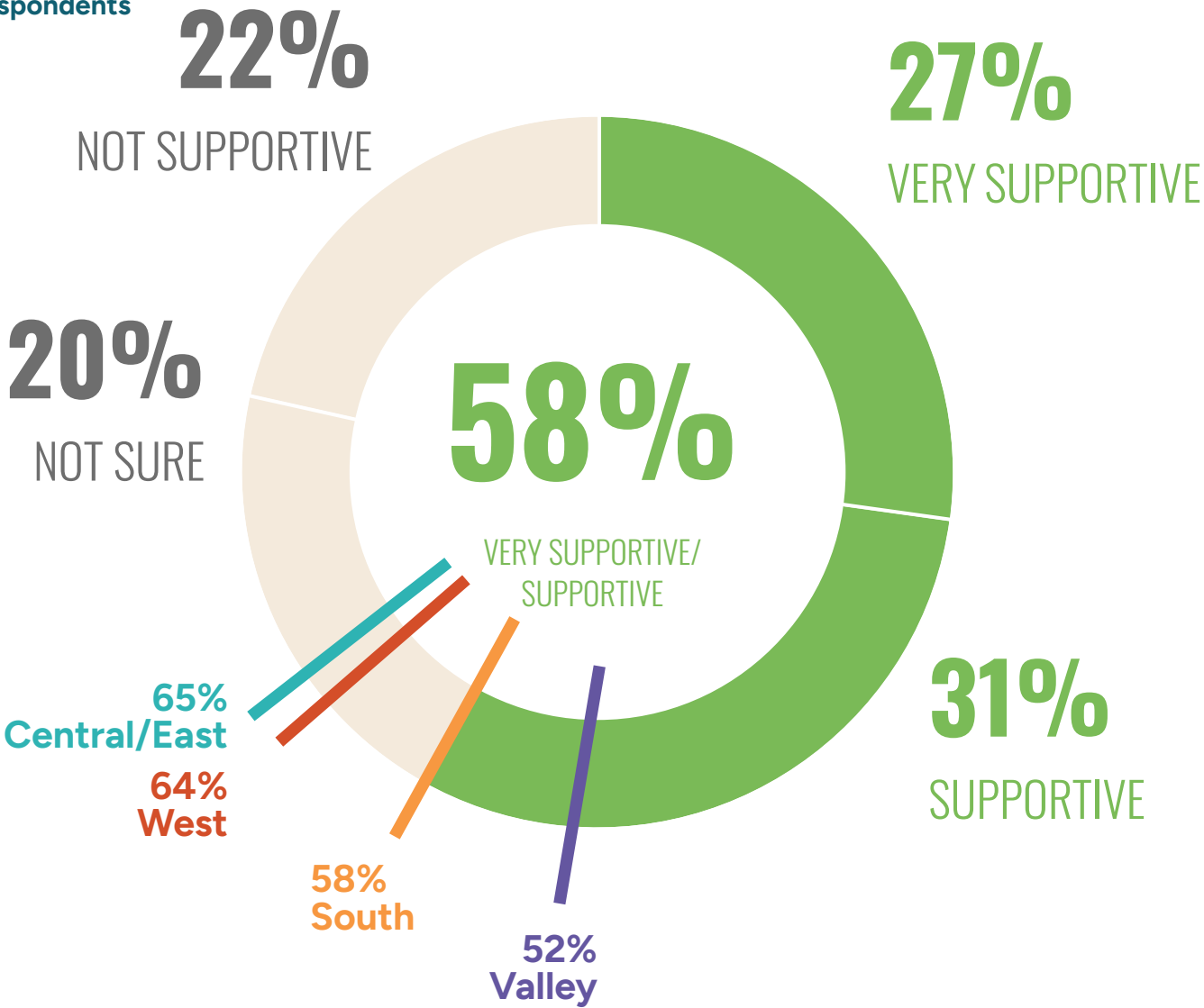
THE FOLLOWING ARE SOME BENEFITS PARKS, TRAILS, RECREATION FACILITIES, AND PROGRAMS PROVIDE. FOR EACH BENEFIT, PLEASE INDICATE YOUR LEVEL OF AGREEMENT.

TAKEAWAYS: FUNDING

MORE THAN HALF OF RESPONDENTS ARE SUPPORTIVE OF A BOND, TAX, OR LEVY TO FUND PARKS AND RECREATION FACILITIES.

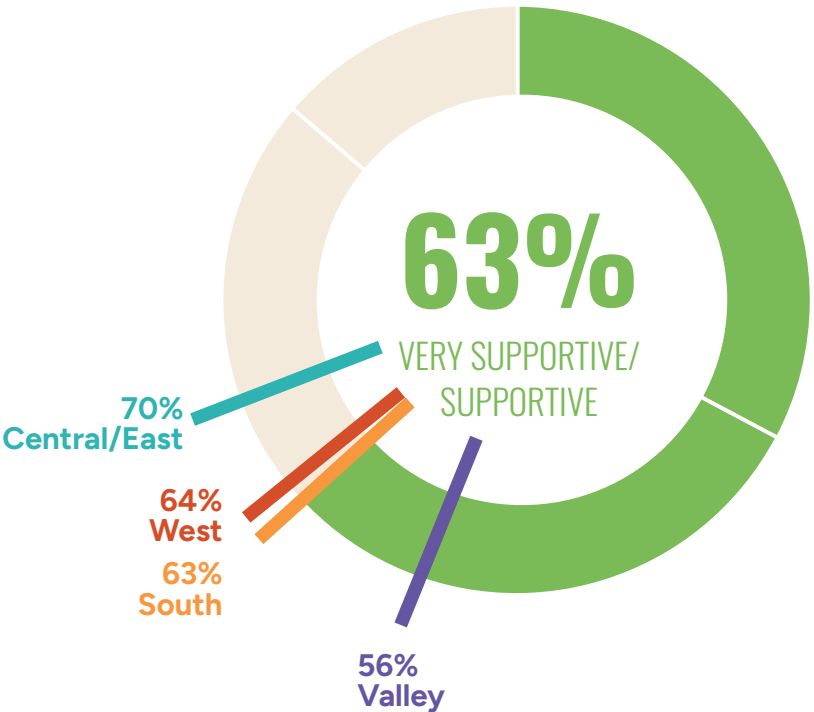
STATISTICALLY VALID SURVEY

933 Total Respondents



ONLINE SURVEY

4,011 Total Respondents



IN-PERSON ENGAGEMENT

41 Total Respondents



HOW SUPPORTIVE ARE YOU OF A BOND OR SOME INCREASE IN TAXES OR LEVIES TO FUND THE TYPES OF PARKS AND RECREATION CENTERS THAT ARE MOST IMPORTANT TO YOU AND YOUR HOUSEHOLD?



**"GOOD TRAILS!
HIKING AND NICE
LARGE CHUNKS OF
AREAS TO EXPLORE"**

**"STAFF ARE ALMOST
ALWAYS AMAZING
AND ARE THERE TO
HELP KIDS AND HAVE
FUN!"**

**"AFFORDABLE
SPORTS GAMES
& KIDS SUMMER
PROGRAM"**

**"THERE IS A NICE
VARIETY AND SOME
LARGE TRACKS OF
LAND DEVOTED TO
PARKS. NEW PARKS
LIKE THE ONE NEAR
CHINATOWN ARE
WELL-MAINTAINED.
HIKING TRAILS ARE
MORE PLENTIFUL
THAN I EXPECTED."**

**"THEY ARE EVERYWHERE!
PAN PACIFIC IS A CROWN
JEWEL - THE GROUNDS
HAVE BECOME MORE
BEAUTIFUL WITH TIME AND
I LOVE AND APPRECIATE
THE SUMMER CAMP FOR
KIDS."**

**"DIVERSITY,
EQUITY AND
INCLUSION.
MY LOCAL
PARK IS A
WELCOMING
PLACE"**

WHAT DOES LOS ANGELES DO WELL IN PARKS AND RECREATION?

“A LOT MORE TREES AND SHADE IN EXISTING PARKS. MORE PARKS IN DENSE AREAS. MORE WALKING/HIKING PATHS.”

“DOWNTOWN LA LACKS GREENSPACE. SOUTH OF GRAND PARK DESPITE BEING DOTTED WITH EMPTY LOTS AND UNDERUSED OR ABANDONED COMMERCIAL PROPERTIES. MUCH MORE COULD BE DONE HERE TO CREATE SMALL PARK SPACE.”

“SOLVE THE QUALITY DISPARITY! WHY CAN’T EVERY PARK HAVE THAT GRIFFITH PARK ‘FEEL’ NO MATTER THE ACREAGE”

“PUTTING MORE PARK LANDS IN AREAS IN DOWNTOWN WHERE PEOPLE LIVE. FEW LIVE NEAR THE LARGEST PARK. WE NEED TO BUILD PLACES MORE THOUGHTFULLY”

“EQUITY IN FUNDING”

“PROVIDE MORE OPPORTUNITIES FOR THE COMMUNITY TO GET INVOLVED AND SPACE FOR OPEN DIALOGUE”

"MY KIDS TAKING TENNIS CLASSES AT KNAPP RANCH AND ME SITTING WITH FRIENDS AND MEETING NEW FAMILIES AS THE KIDS PLAYED. MAKING FRIENDS IN THE COMMUNITY IS SO IMPORTANT."

"FIREWORKS AS A CHILD AT LANARK PARK THEN CONCERTS IN THE PARK AND FIREWORKS AT WARNER CENTER, WALKING AROUND ORCUTT PARK, SUMMERS RUNNING ALL OVER CHATSWORTH AND TAPIA- TOO MANY TO NAME!"

"SWIMMING AT THE HIGHLAND PARK POOL DURING THE SUMMER, MEETING FRIENDS THERE, GETTING LUNCH/ DINNER FROM A TACO TRUCK NEAR BY."

"LEADING BIRDWALK WITH AN ARTS GROUP IN THE SEPULVEDA BASIN WILDLIFE AREA WHEN A RED-TAILED HAWK PERCHED RIGHT IN THE MIDDLE OF THE GROUP, SIMILAR EXPERIENCE WITH A YOUTH GROUP."

"MY FAVORITE MEMORIES INCLUDE THE AMAZING STAFF AT OUR LOCAL REC CENTER- -THEY HAVE PROVIDED SUCH INCREDIBLE CHILDCARE FOR MY FAMILY."

WHAT IS YOUR FAVORITE LOS ANGELES PARK AND RECREATION MEMORY?